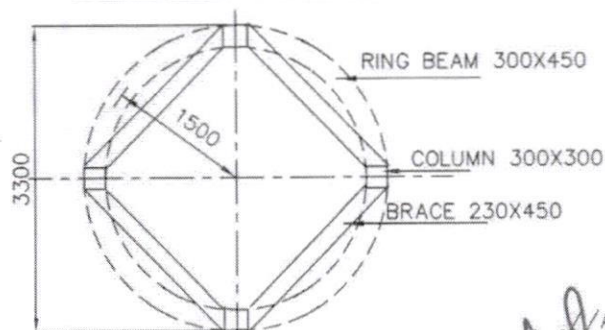


SECTION ELEVATION



PLAN

Approved//
 Chief Engineer-II
 RWS&S, Gollapudi
 Vijayawada.

Pon
 Asst Executive Engineer
835
 Dy.Executive Engineer
 7.2.2019

**10KL OHSR WITH
 9.40m STAGING**

1255

8mm ϕ @ 175c/c

8mm ϕ @ 175c/c

100

150

8mm ϕ @ 175c/c

10mm ϕ @ 200c/c

10mm ϕ @ 200c/c (STAGGERED)

10mm ϕ @ 200c/c

150

1800

150

10mm ϕ @ 200c/c (UPTO 1000 HEIGHT)

150

10mm ϕ @ 200c/c

10mm ϕ @ 200c/c

10mm ϕ @ 200c/c UPTO 1200 HEIGHT

10mm ϕ @ 200c/c

300

230

10mm ϕ @ 200c/c

10mm ϕ @ 200c/c

//Approved//

Chief Engineer-II
RWS&S, Gollapudi
Vijayawada.

DRG NO:

10mm-200c/c

900

10mm \varnothing @ 200c/c

10mm \varnothing @ 200c/c

10mm \varnothing @ 200c/c

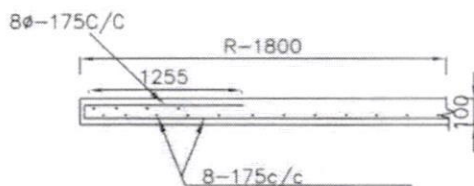
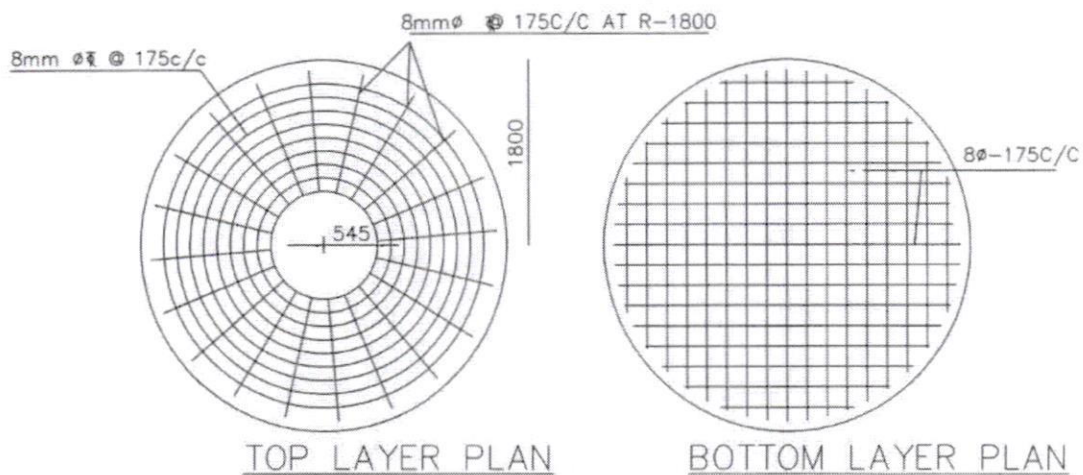
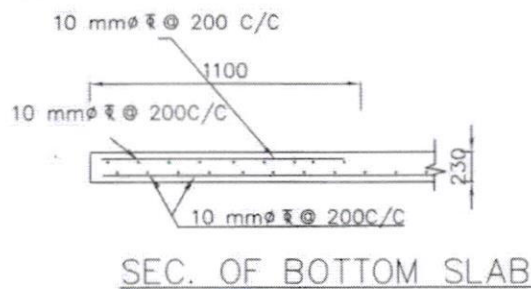
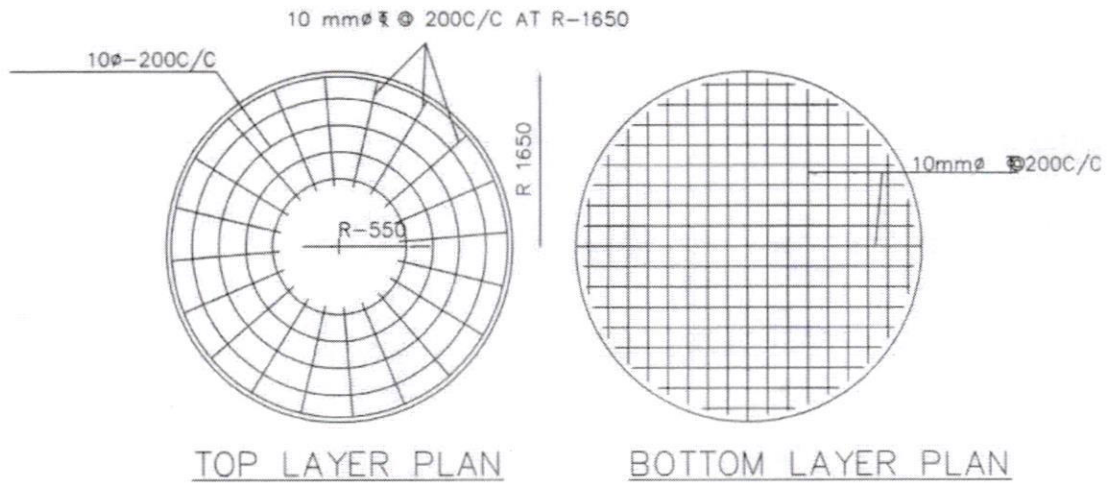
230

8mm-200c/c

P. R.

22-2-2011

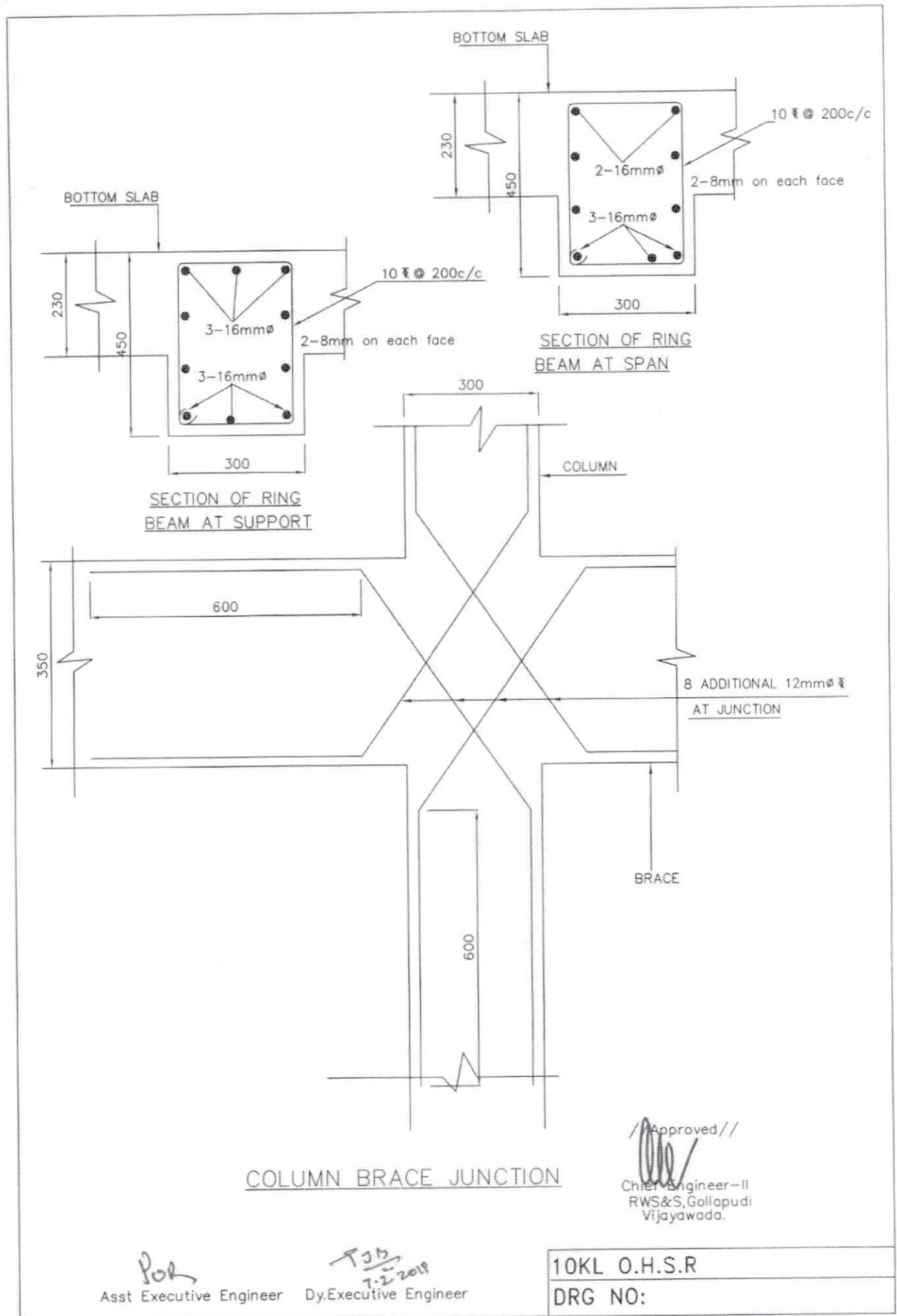
Asst Executive Engineer Dy. Executive Engineer

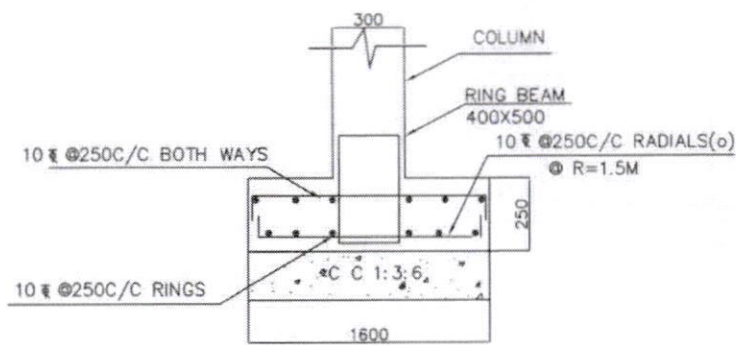


// Approved //

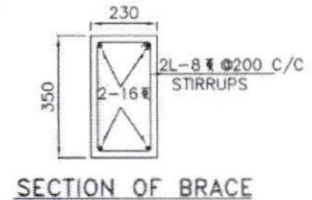
Chief Engineer-II
RWS&S, Gollapudi
Vijayawada.

Asst Executive Engineer Dy. Executive Engineer 10KL O.H.S.R
DRG NO:4

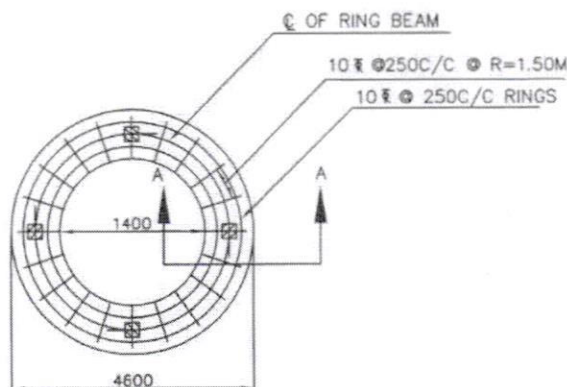




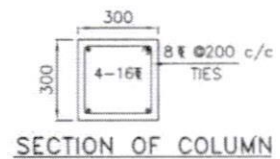
SECTION A-A



SECTION OF BRACE



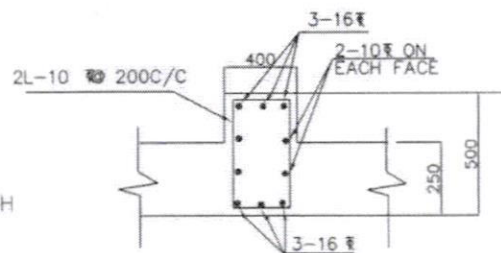
BOTTOM REINFORCEMENT OF RING FOUNDATION



SECTION OF COLUMN

NOTES:

1. Grade of concrete : M30
2. Grade of steel : Fe415
3. Depth of foundation : 2.0m
below G.L upto top of raft
4. Basic wind speed : 150 KMPH
5. Staging height : 9.40M
Clear height between the braces : 2.70M
No. of stagings : 3
6. 8 Nos of 16 # diagonal bars shall be provided at column brace junction
7. For detailing of reinforcement I.S SP-34 shall be followed
8. All dimensions are in 'mm' unless specified



SECTION OF RING BEAM

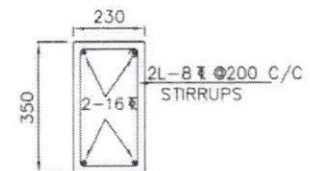
Asst Executive Engineer Dy.Executive Engineer

Approved//
Chief Engineer-II
RWS&S, Gollapudi
Vijayawada.

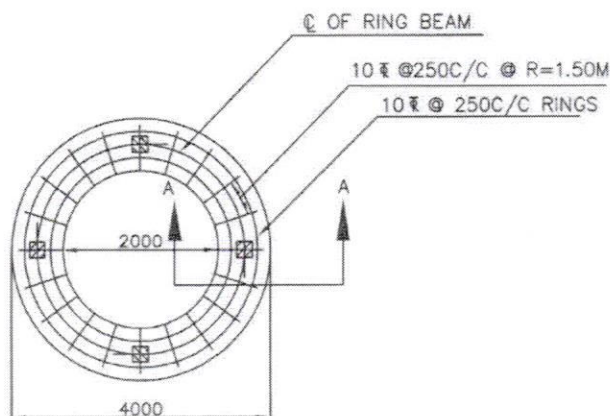
FOUNDATION DETAILS

10KL OHSR-9.40m

S.B.C OF SOIL-5T/M²



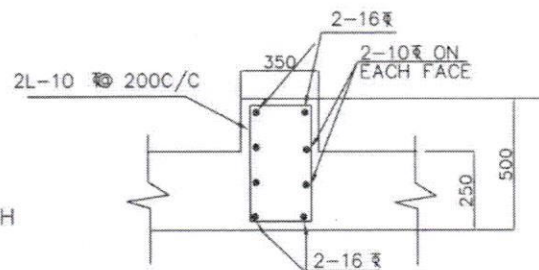
SECTION A-A



SECTION OF COLUMN

NOTES:

1. Grade of concrete : M30
- Grade of steel : Fe415
2. Depth of foundation : 2.0m
- below G.L upto top of raft
3. Basic wind speed : 150 KMPH
4. Staging height : 9.40M
- Clear height between the braces : 2.70M
- No. of stagings : 3
5. 8 Nos of 16 ϕ diagonal bars shall be provided at column brace junction
6. For detailing of reinforcement I.S SP-34 shall be followed
7. All dimensions are in 'mm' unless specified



SECTION OF RING BEAM

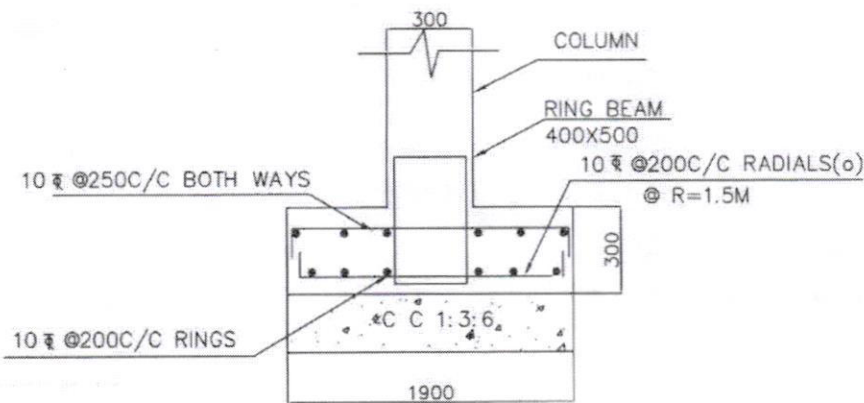
Asst Executive Engineer Dy.Executive Engineer

Chief Engineer-II
RWS&S, Gollapudi
Vijayawada.

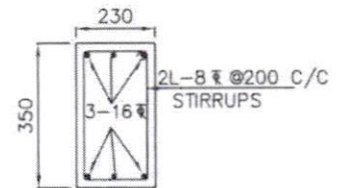
FOUNDATION DETAILS

10KL OHSR-9.40m

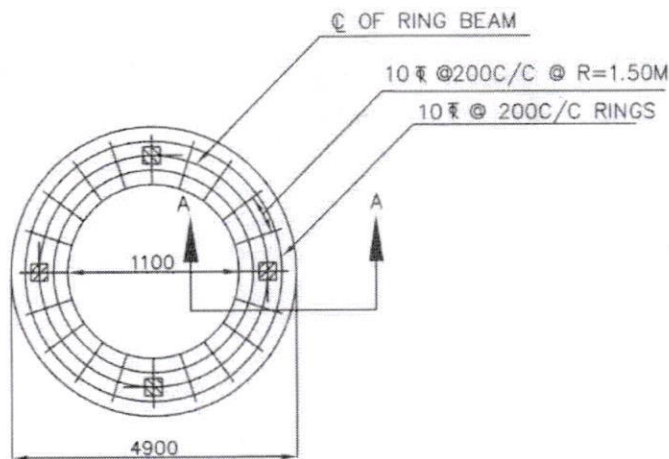
S.B.C OF SOIL $\geq 10 \text{ T/M}^2$



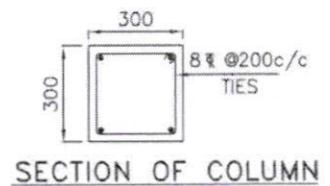
SECTION A-A



SECTION OF BRACE



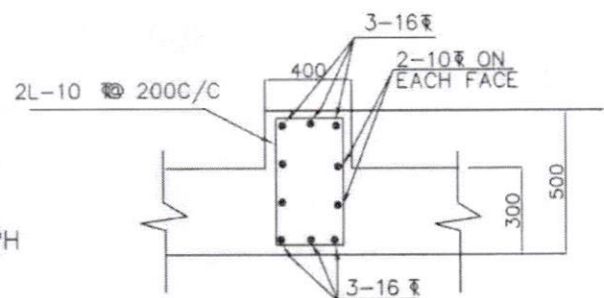
BOTTOM REINFORCEMENT OF RING FOUNDATION



SECTION OF COLUMN

NOTES:

- Grade of concrete : M30
- Grade of steel : Fe415
- Depth of foundation : 2.0m
- below G.L upto top of raft
- Basic wind speed : 200 KMPH
- Staging height : 9.40M
- Clear height between the braces : 2.70M
- No. of stagings : 3
- 8 Nos of 16mm diagonal bars shall be provided at column brace junction
- For detailing of reinforcement I.S SP-34 shall be followed
- All dimensions are in 'mm' unless specified



SECTION OF RING BEAM

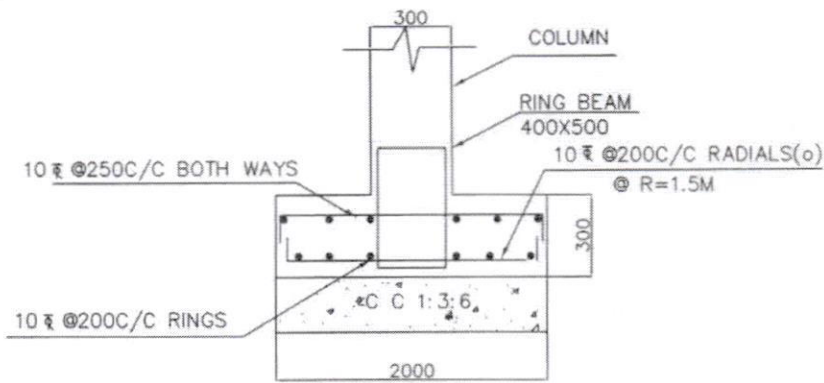
Asst Executive Engineer Dy.Executive Engineer

Approved//
Chief Engineer-II
RWS&S, Gollapudi
Vijayawada.

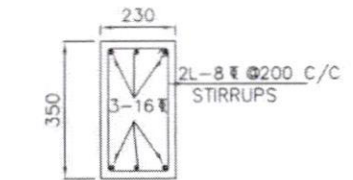
FOUNDATION DETAILS

10KL OHSR-9.40m

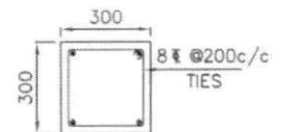
S.B.C OF SOIL=>10T/M²



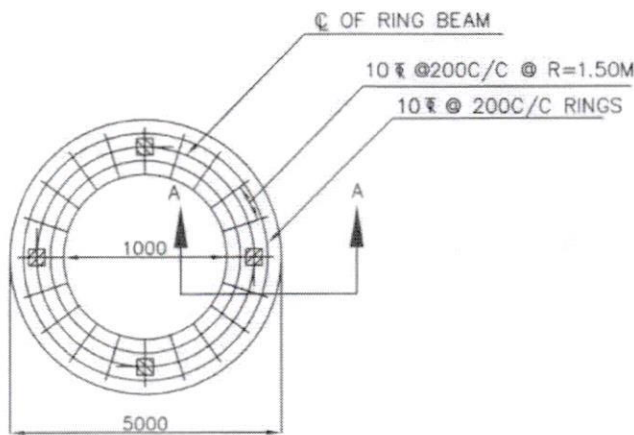
SECTION A-A



SECTION OF BRACE



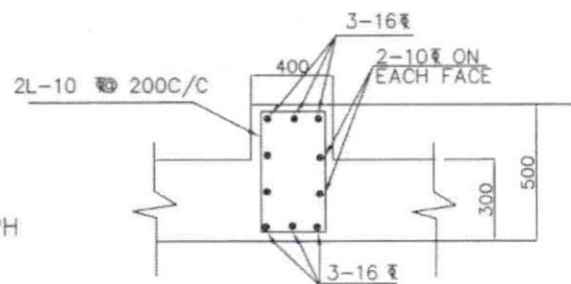
SECTION OF COLUMN



BOTTOM REINFORCEMENT OF RING FOUNDATION

NOTES:

- Grade of concrete : M30
- Grade of steel : Fe415
- Depth of foundation : 2.0m
below G.L upto top of raft
- Basic wind speed : 200 KMPH
- Staging height : 9.40m
Clear height between the braces : 2.70m
No. of stagings : 3
- 8 Nos of 16 bars diagonal bars shall be provided at column brace junction
- For detailing of reinforcement I.S SP-34 shall be followed
- All dimensions are in 'mm' unless specified



SECTION OF RING BEAM

FOUNDATION DETAILS

10KL OHSR-9.40m

S.B.C OF SOIL $\geq 5T/M^2$

Asst Executive Engineer Dy.Executive Engineer

Approved//
Chief Engineer-II
RWS&S, Gollapudi
Vijayawada.