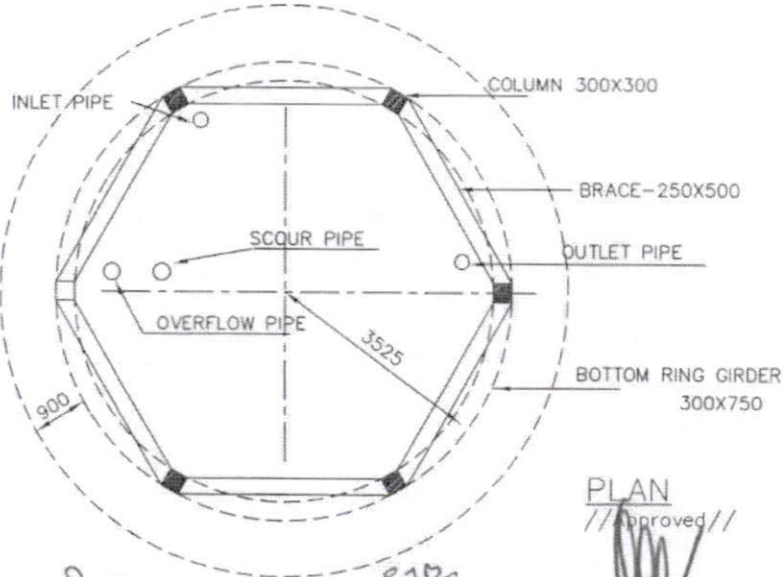


CONDITIONS

1. Concrete(All members) : M30
2. Steel : Tor 40, Fe415
3. Clear cover
Side walls : 25MM
Top & Bottom slabs : 25MM
Beams : 25MM
Columns : 40MM
Footings : 50MM
4. All dimension are in 'mm' unless specified.
5. The steel should not be overlapped at the junction points
6. Not more than 1/3rd of the bars should be curtailed at a given section

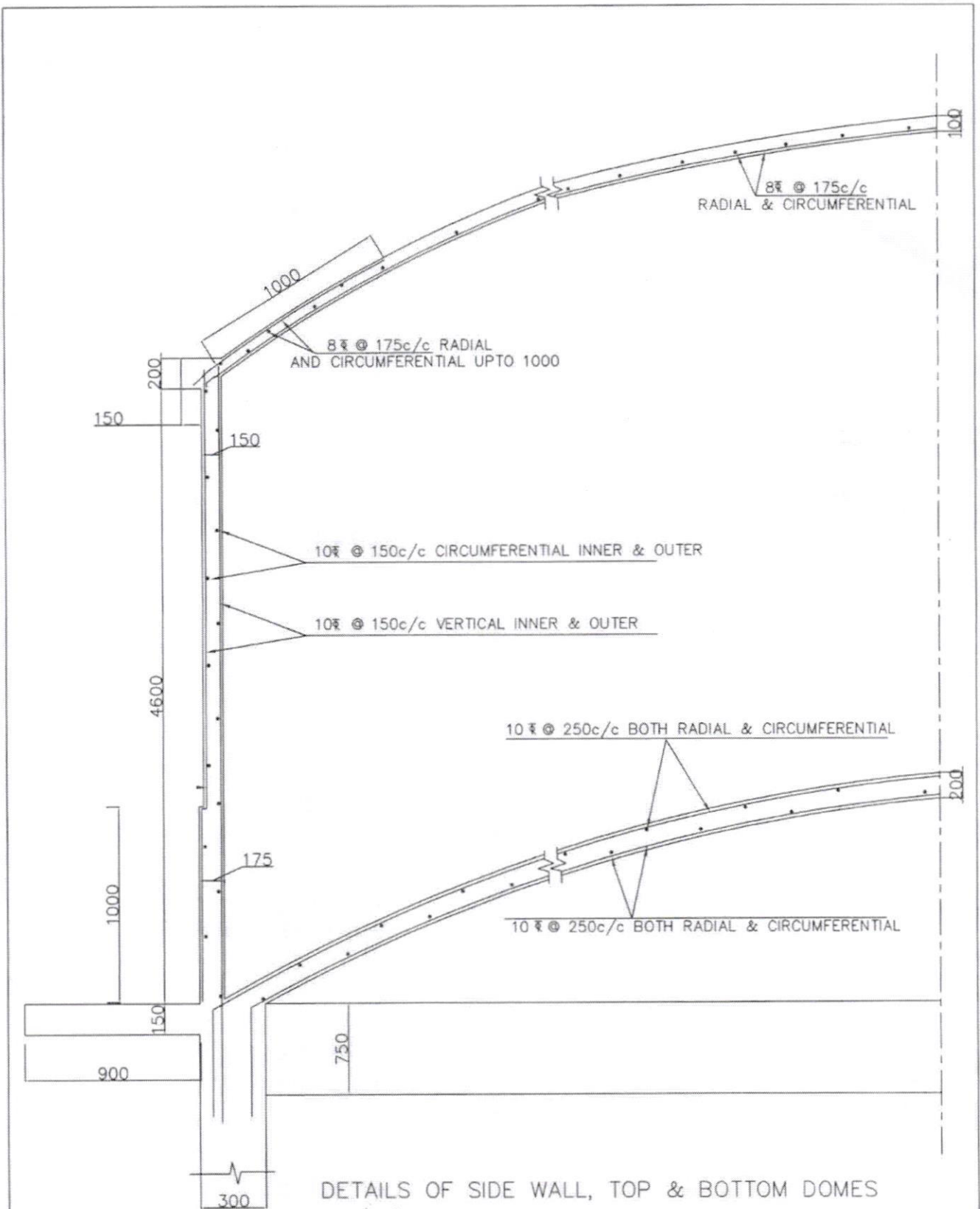


Approved

Asst. Executive Engineer Dy. Executive Engineer

Chief Engineer-II
RWS&S, Gollapudi
Vijayawada.

SCHEME:
150KL O.H.S.R
DRG NO:1



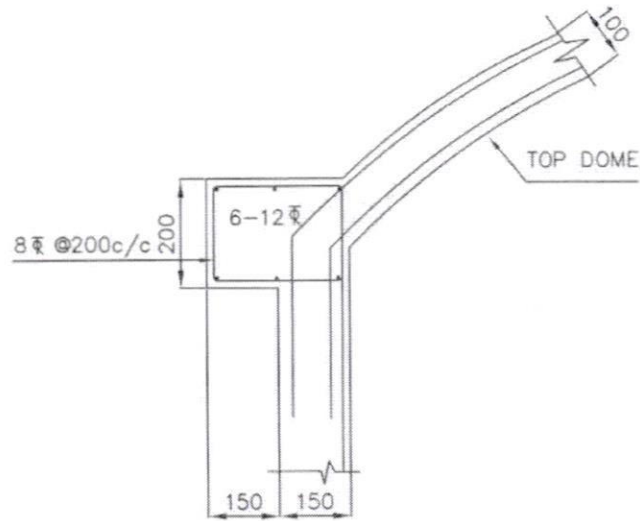
Asst Executive Engineer

Dy. Executive Engineer

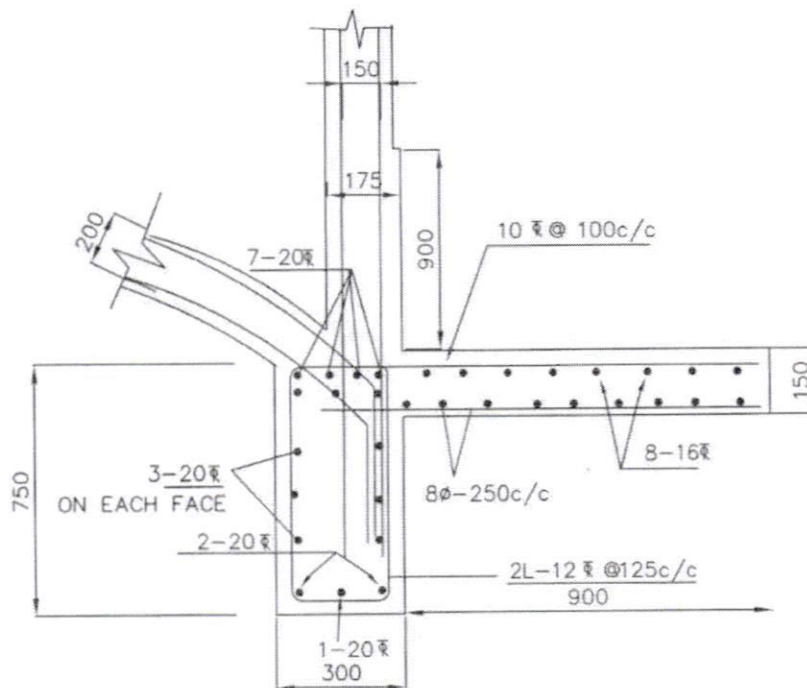
// Approved //

Chief Engineer-II
RWS&S, Gollapudi
Vijayawada.

SCHEME:
150KL O.H.S.R
DRG NO : 3



DETAILS OF TOP RING BEAM



BOTTOM RING BEAM CUM LANDING

PUR
Asst Executive Engineer Dy.Executive Engineer

TSB
7.2.2019

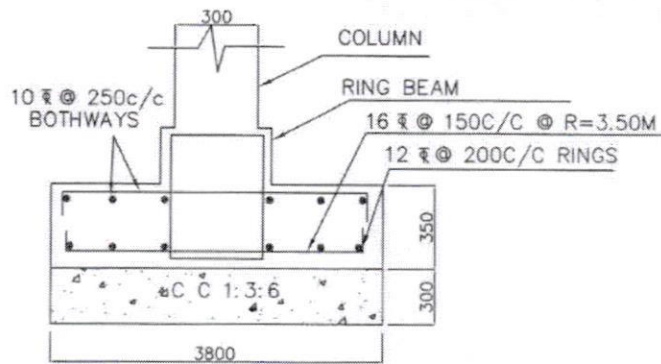
//Approved//

Chief Engineer-II
RWS&S, Gollapudi
Vijayawada.

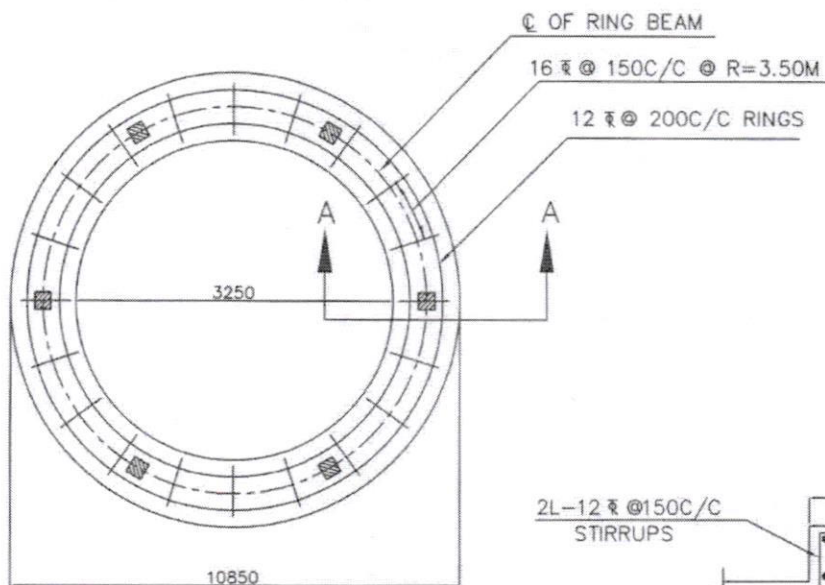
SCHEME:

1:50 KL OHSR

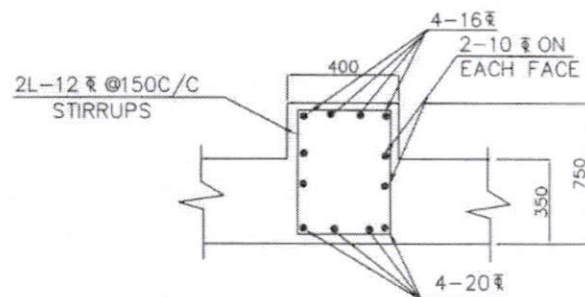
DRG NO:4



SECTION A-A



BOTTOM REINFORCEMENT OF
RING FOUNDATION



SECTION OF RING BEAM

NOTES:

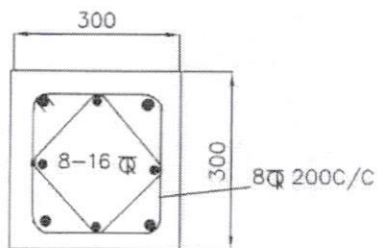
1. Grade of concrete : M30
Grade of steel : Fe415
2. Depth of foundation : 2.0m
below G.L upto top of raft
3. Basic wind speed : 200 KMPH
4. Staging height : 13.20M
Clear height between the braces : 2.70
No. of stagings : 4
5. 8 Nos of 16 ϕ diagonal bars shall
be provided at column brace junction
6. For detailing of reinforcement
I.S SP-34 shall be followed
7. All dimensions are in 'mm' unless specified.

Asst Executive Engineer

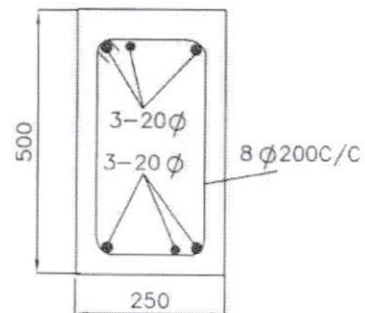
Dy. Executive Engineer

Chief Engineer-II
RWS&S, Gollapudi
Vijayawada.

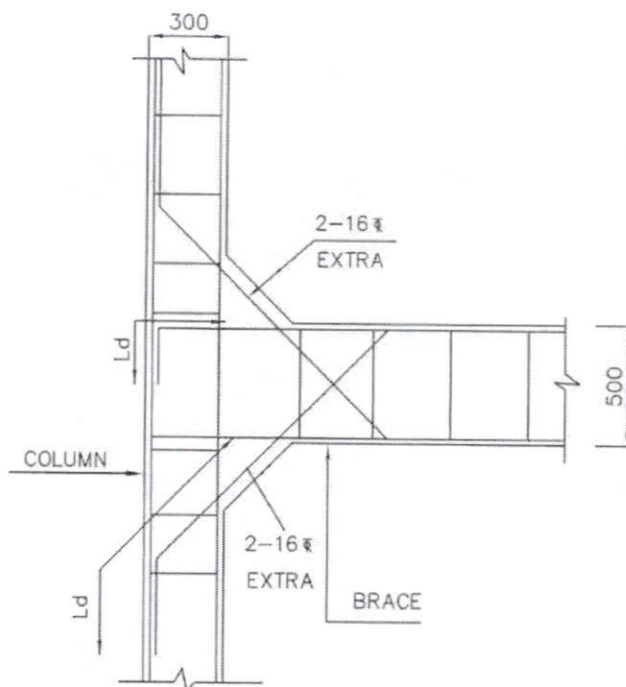
FOUNDATION DETAILS OF
150KL O.H.S.R WITH
SBC OF SOIL-5T/M²
DRG.NO.5



SECTION OF COLUMN



SECTION OF BRACE



COLUMN BRACE JUNCTION

POR
Asst Executive Engineer

935
7.2.2019
Dy.Executive Engineer

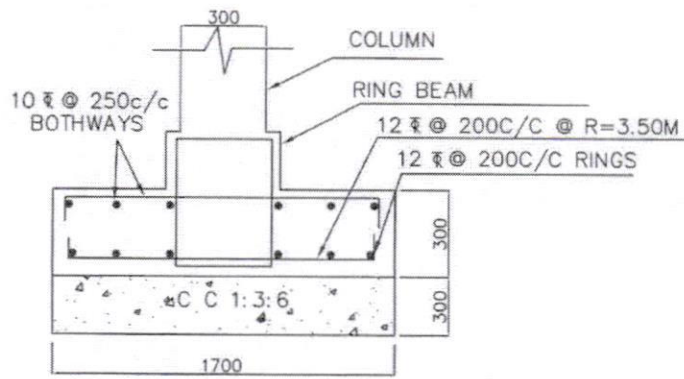
Approved
Chief Engineer-II
RWS&S, Gollapudi
Vijayawada.

Wind speed: 200 kmph

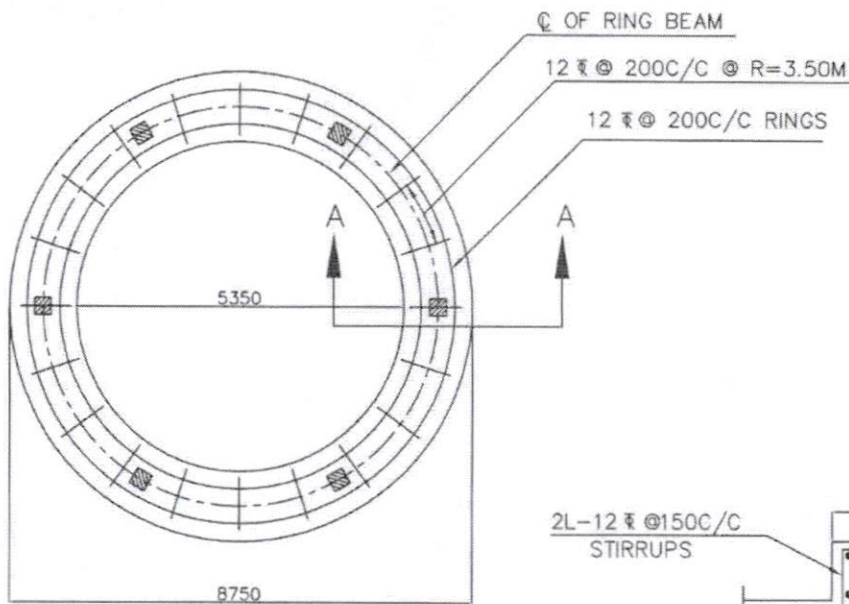
SCHEME:

150 KL OHSR

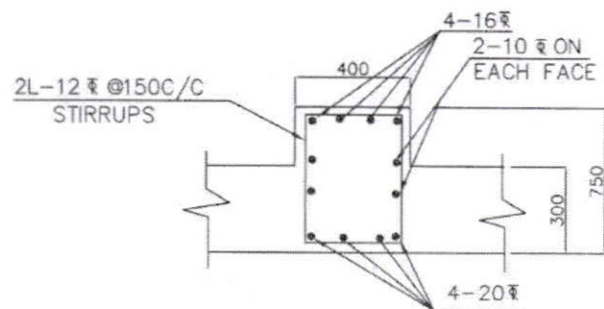
DRG NO:2



SECTION A-A



BOTTOM REINFORCEMENT OF
RING FOUNDATION



SECTION OF RING BEAM

NOTES:

1. Grade of concrete : M30
Grade of steel : Fe415
2. Depth of foundation : 2.0m
below G.L upto top of raft
3. Basic wind speed : 200 KMPH
4. Staging height : 13.20m
Clear height between the braces : 2.70
No. of stagings : 4
5. 8 Nos of 16 ϕ diagonal bars shall
be provided at column brace junction
6. For detailing of reinforcement
I.S SP-34 shall be followed
7. All dimensions are in 'mm' unless specified.

POR

Asst Executive Engineer

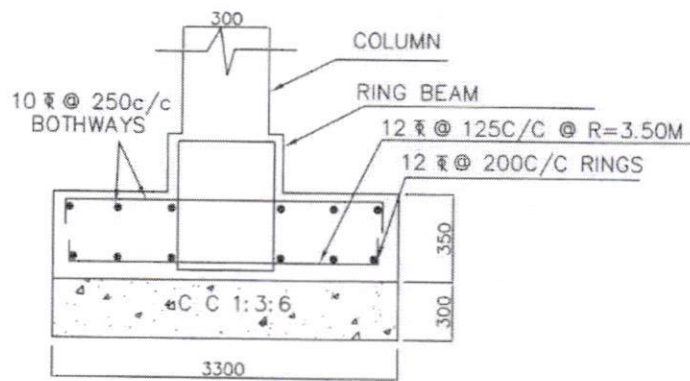
7.2.2019

Dy.Executive Engineer

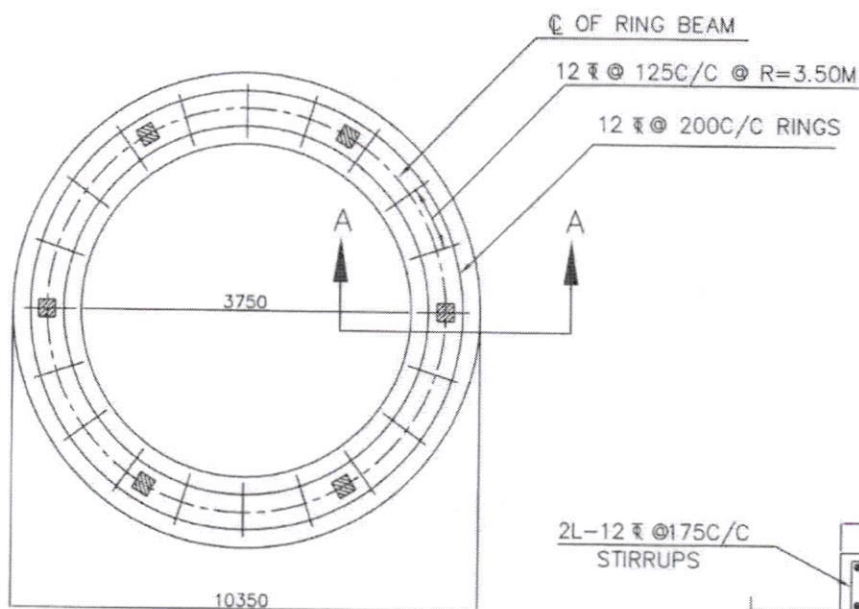
// Approved //

Chief Engineer-II
RWS&S, Gollapudi
Vijayawada.

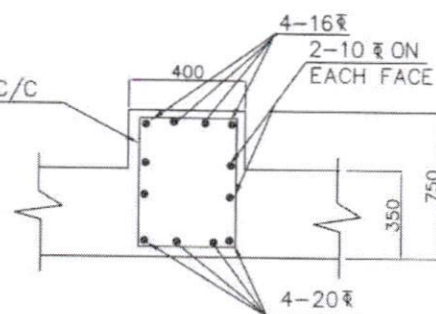
FOUNDATION DETAILS OF
150KL O.H.S.R WITH
SBC OF SOIL-10T/M²
DRG.NO.5



SECTION A-A



BOTTOM REINFORCEMENT OF
RING FOUNDATION



SECTION OF RING BEAM

NOTES:

1. Grade of concrete : M30
Grade of steel : Fe415
2. Depth of foundation : 2.0m
below G.L upto top of raft
3. Basic wind speed : 150 KMPH
4. Staging height : 13.20M
Clear height between the braces : 2.70
No. of stagings : 4
5. 8 Nos of 16 mm diagonal bars shall be provided at column brace junction
6. For detailing of reinforcement I.S SP-34 shall be followed
7. All dimensions are in 'mm' unless specified

[Signature]

Asst Executive Engineer

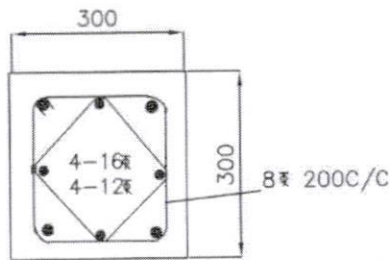
[Signature]
7.2.2019

Dy. Executive Engineer

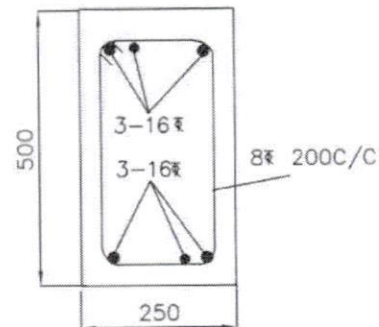
// Approved //

Chief Engineer-II
RWS&S, Gollapudi
Vijayawada.

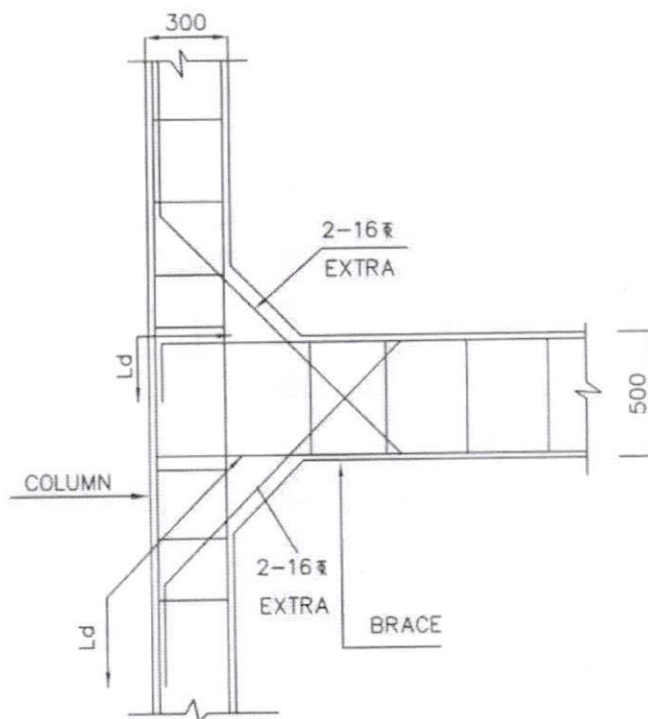
FOUNDATION DETAILS OF
150KL O.H.S.R WITH
SBC OF SOIL-5T/M²
DRG.NO.5



SECTION OF COLUMN



SECTION OF BRACE



COLUMN BRACE JUNCTION

wind speed : 150 KMPH

SCHEME:

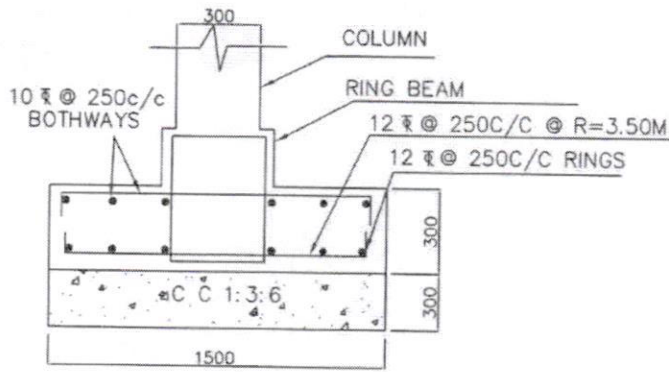
150 KL OHSR

DRG NO:2

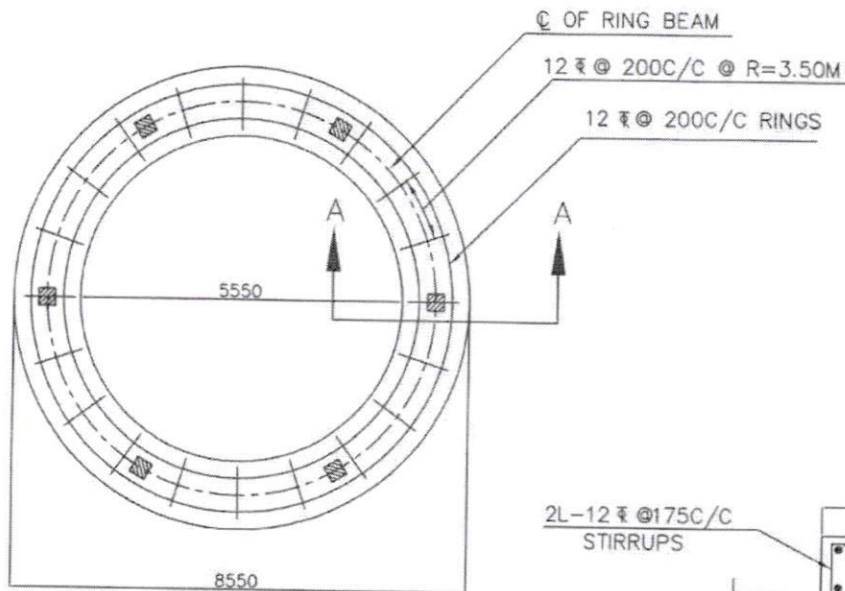
Asst Executive Engineer

Dy.Executive Engineer

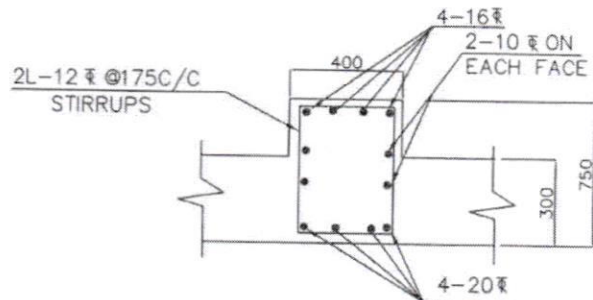
Approved //
Chief Engineer-II
RWS&S, Gollapudi
Vijayawada.



SECTION A-A



BOTTOM REINFORCEMENT OF
RING FOUNDATION



SECTION OF RING BEAM

NOTES:

- Grade of concrete : M30
- Grade of steel : Fe415
- Depth of foundation : 2.0m
below G.L upto top of raft
- Basic wind speed : 150 KMPH
- Staging height : 13.20M
Clear height between the braces : 2.70
No. of stagings : 4
- 8 Nos of 16mm diagonal bars shall be provided at column brace junction
- For detailing of reinforcement I.S SP-34 shall be followed
- All dimensions are in 'mm' unless specified

PGR
Asst Executive Engineer

925
7.2.2019
Dy.Executive Engineer

[Signature]
Approved//
Chief Engineer-II
RWS&S, Gollapudi
Vijayawada.

FOUNDATION DETAILS OF
150KL O.H.S.R WITH
SBC OF SOIL-10T/M²
DRG.NO.5