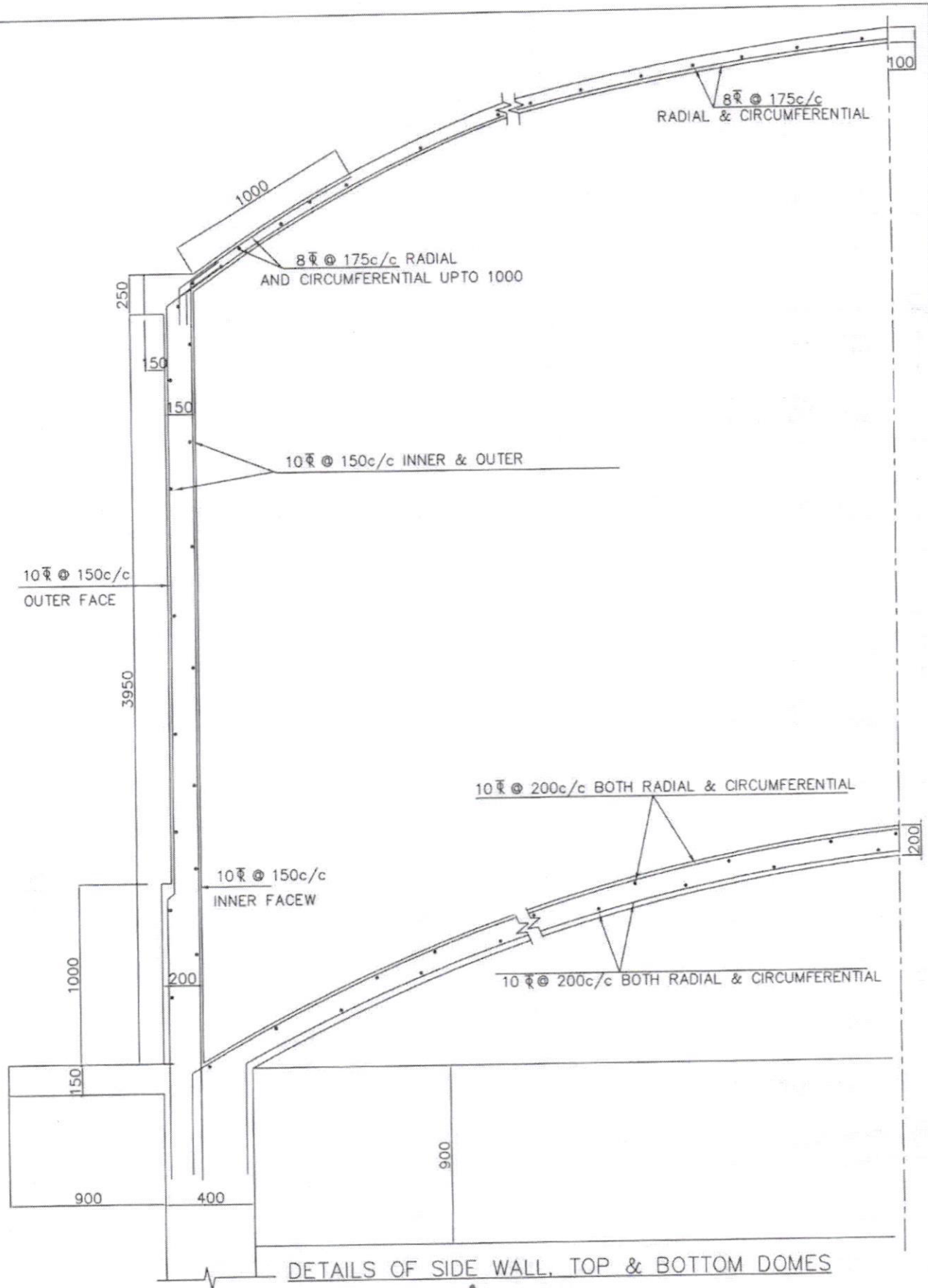


// Approved //

Chief Engineer-II
RWS&S, Gollapudi
Vijayawada.

Asst Executive Engineer Dy.Executive Engineer

SCHEME :
CAPACITY:200KL-OHSR
13.35m staging



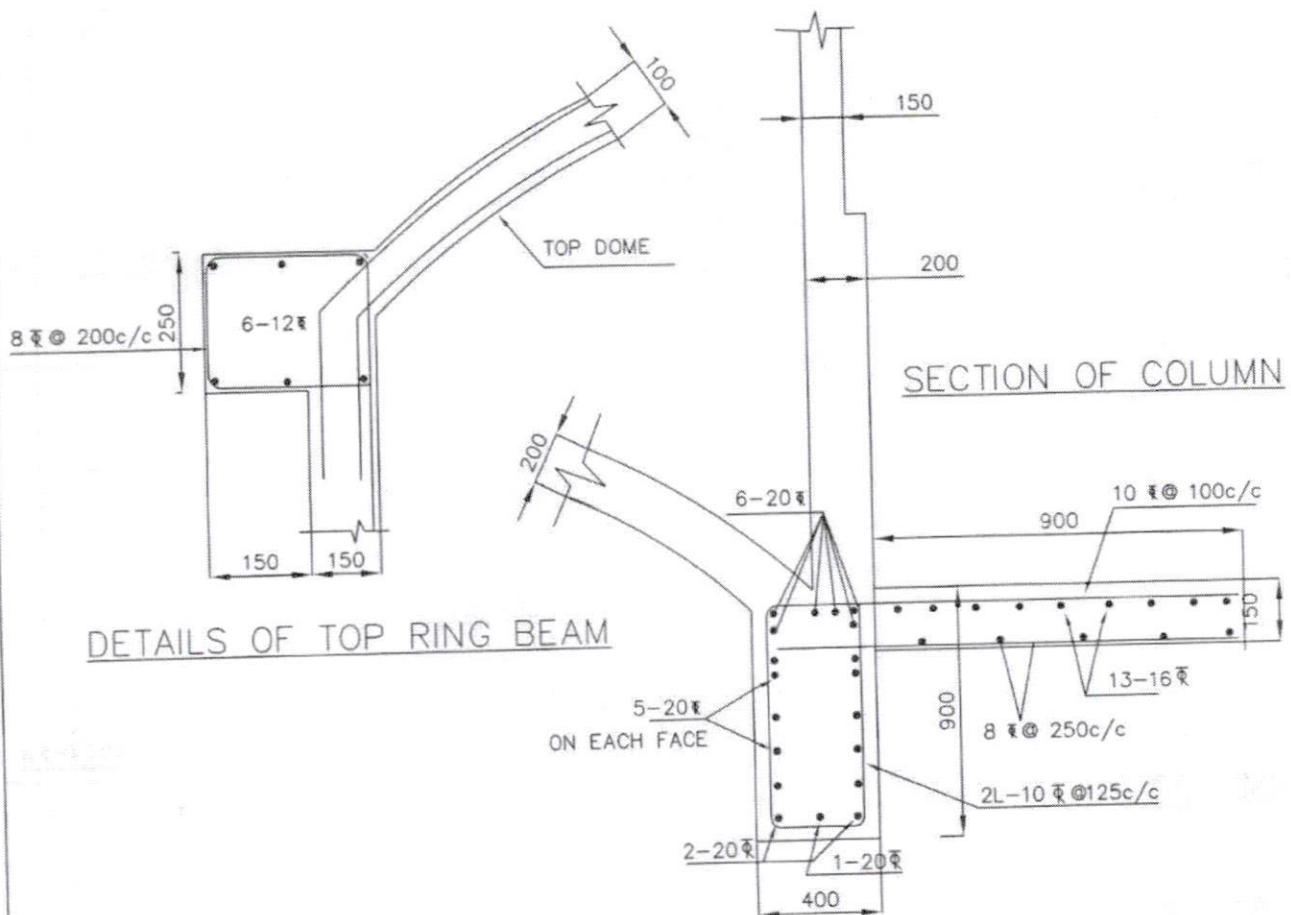
Asst Executive Engineer Dy.Executive Engineer

Chief Engineer-II
RWS&S, Gollapudi
Vijayawada.

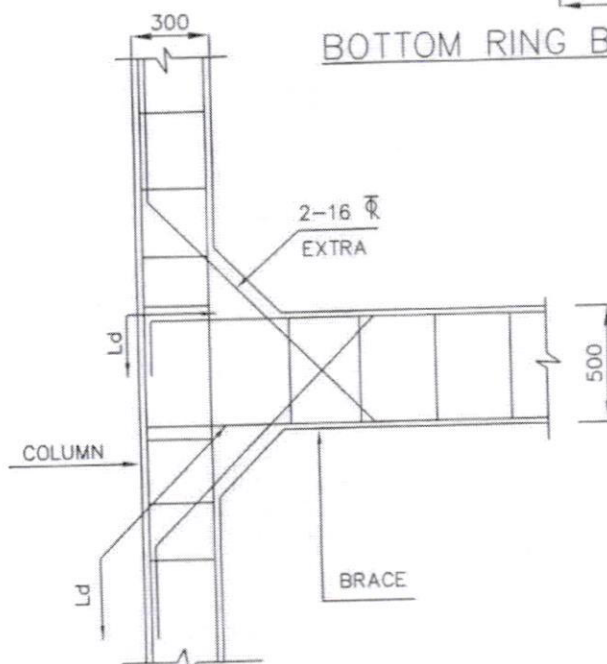
7-2-2019

// Approved //

TANK DETAILS OF
200KL-OHSR
13.35m staging



BOTTOM RING BEAM CUM LANDING



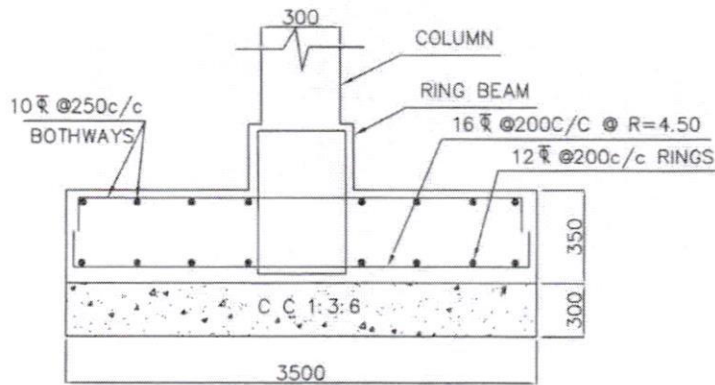
COLUMN BRACE JUNCTION

Asst Executive Engineer

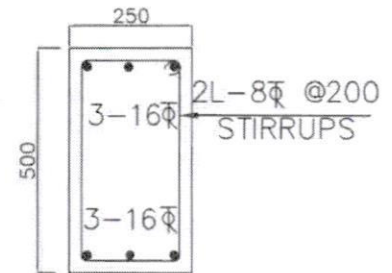
Dy. Executive Engineer

Chief Engineer-II
RWS&S, Gollapudi
Vijayawada.

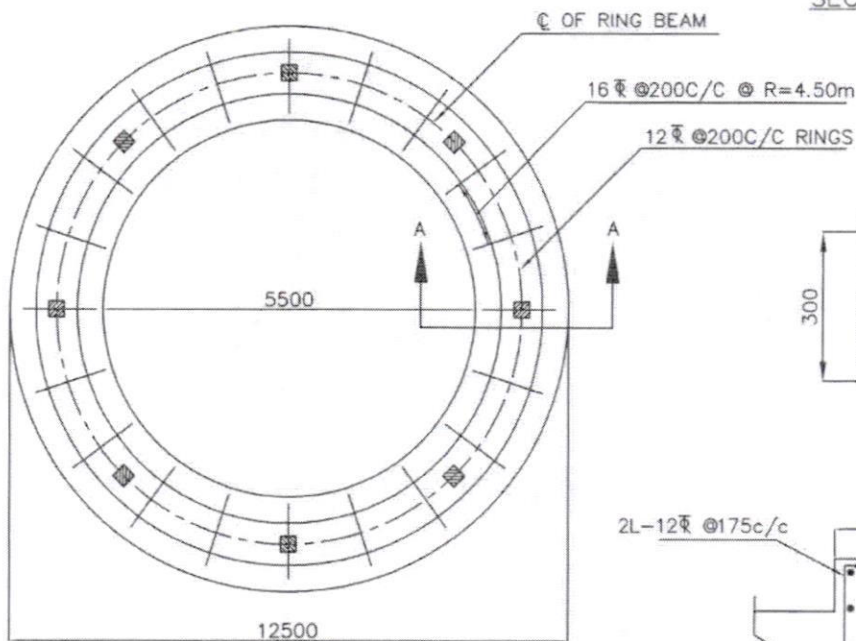
TANK DETAILS OF
200KL-OHSR
13.35m staging



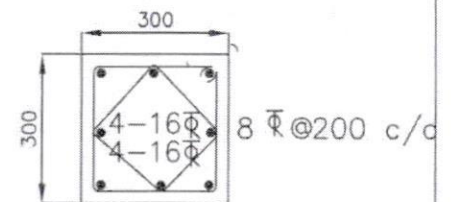
SECTION A-A



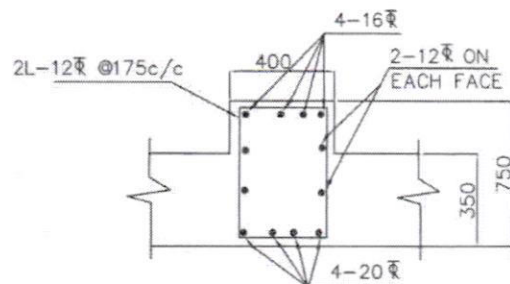
SECTION OF BRACE



BOTTOM REINFORCEMENT OF
RING FOUNDATION



SECTION OF RING BEAM



NOTES:

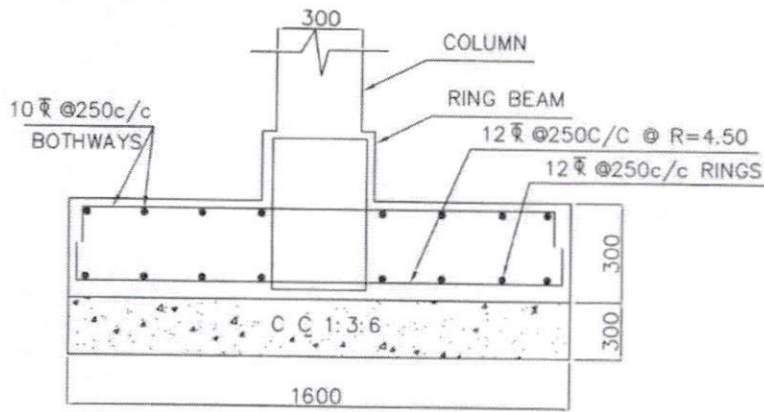
1. Grade of concrete : M30
2. Grade of steel : Fe415
3. Basic wind speed : 150 KMPH
3. Depth of foundation : 2.0M
- below G.L upto top of raft
4. Staging height : 13.35M
- Clear height between the braces : 2.70M
- No. of stagings : 2
5. 8 Nos of 16mm diagonal bars shall be provided at column brace junction

6. For detailing of reinforcement I.S SP-34 shall be followed
7. All dimensions are in 'mm' unless specified.

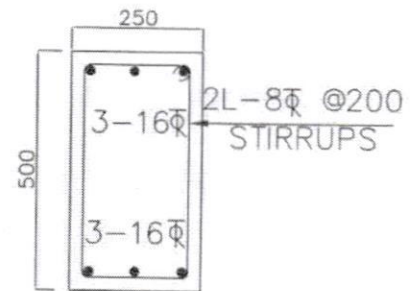
Asst Executive Engineer Dy.Executive Engineer

Chief Engineer-II
RWS&S, Gollapudi
Vijayawada.

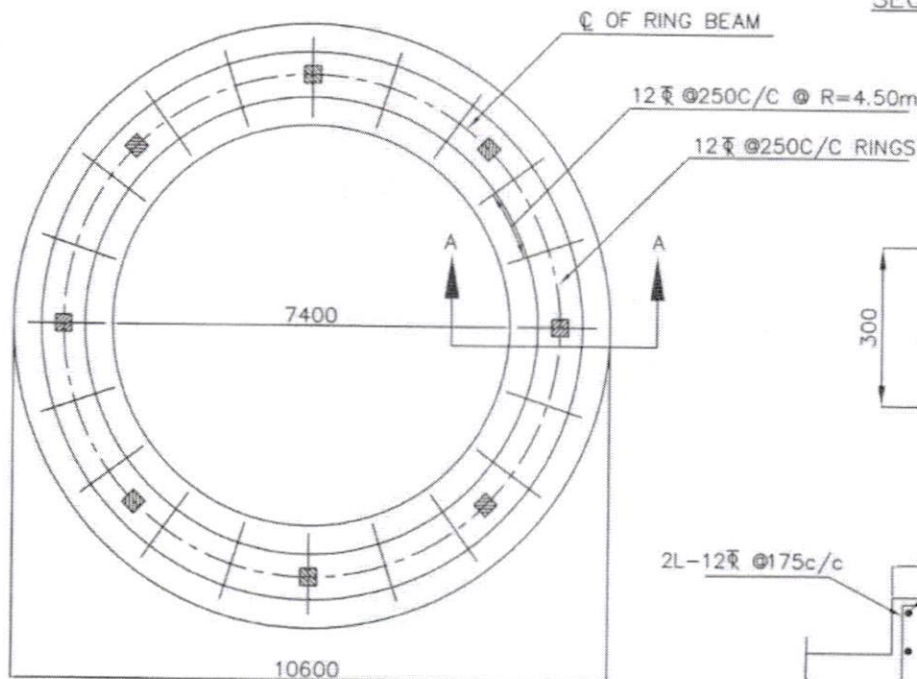
FOUNDATION DETAILS OF
200KL-OHSR WITH
13.35M STAGING
S.B.C. OF SOIL-5T/M²



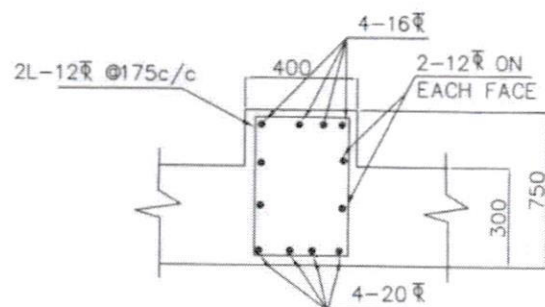
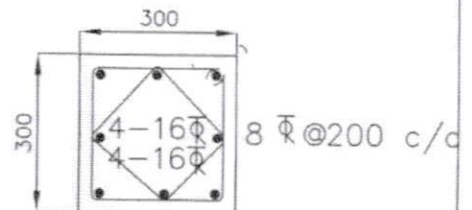
SECTION A-A



SECTION OF BRACE



BOTTOM REINFORCEMENT OF
RING FOUNDATION



SECTION OF RING BEAM

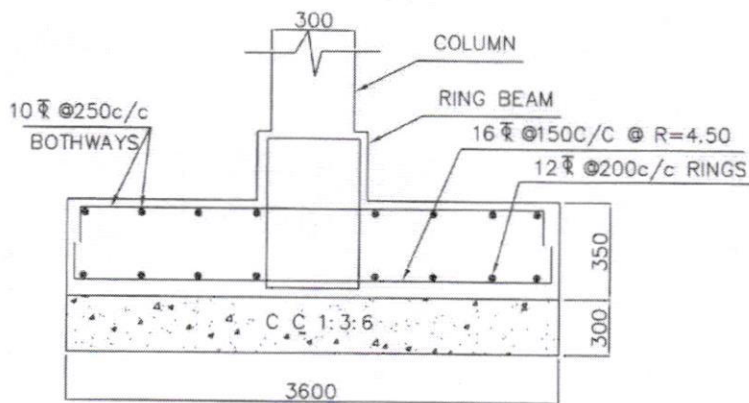
NOTES:

- Grade of concrete : M30
- Grade of steel : Fe415
- Basic wind speed : 150 KMPH
- Depth of foundation : 2.0M
- Staging height : 13.35M
- Clear height between the braces : 2.70M
- No. of stagings : 2
- 8 Nos of 16 bars diagonal bars shall be provided at column brace junction
- For detailing of reinforcement I.S SP-34 shall be followed
- All dimensions are in 'mm' unless specified.

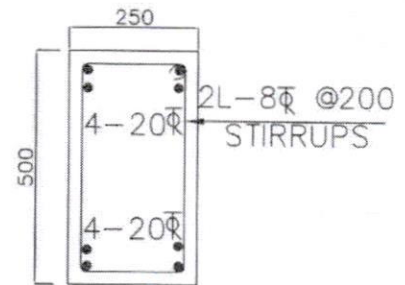
Asst Executive Engineer Dy.Executive Engineer

Chief Engineer-II
RWS&S,Gollapudi
Vijayawada.

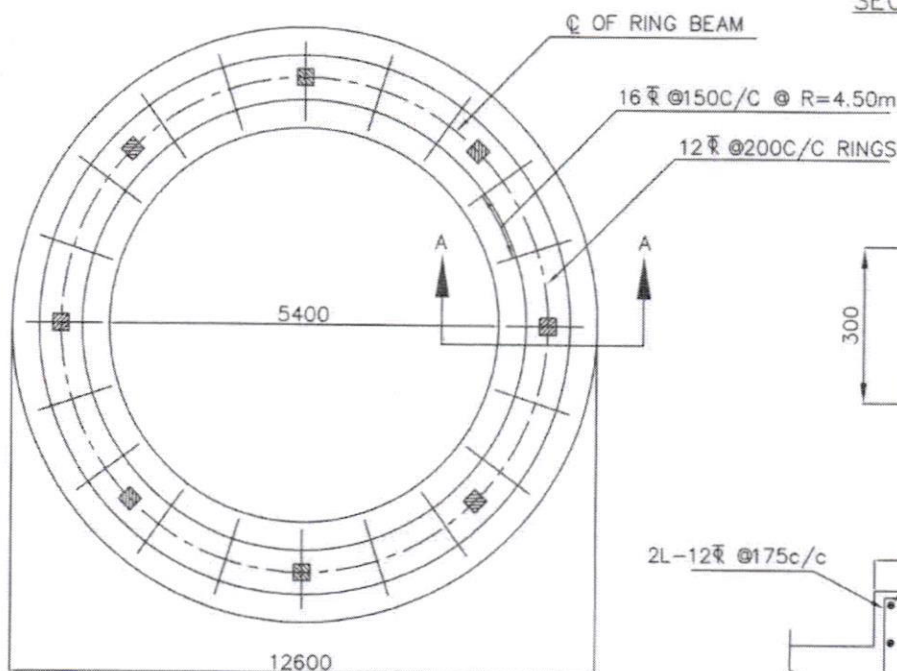
FOUNDATION DETAILS OF
200KL-OHSR WITH
13.35M STAGING
S.B.C.OF SOIL-10T/M²



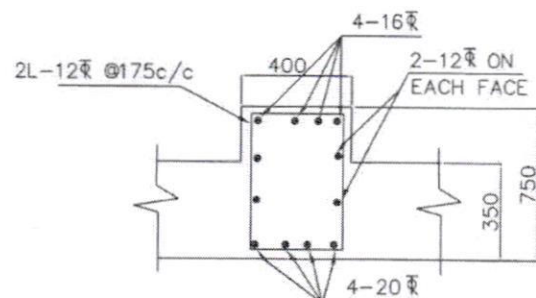
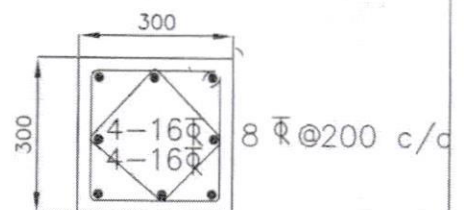
SECTION A-A



SECTION OF BRACE



BOTTOM REINFORCEMENT OF
RING FOUNDATION



SECTION OF RING BEAM

NOTES:

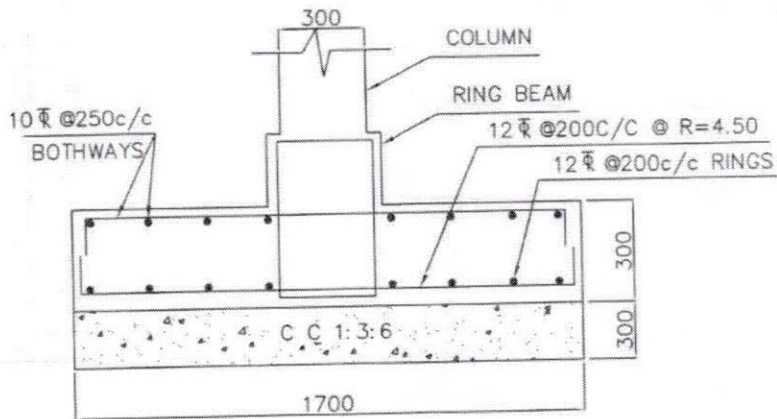
- Grade of concrete : M30
- Grade of steel : Fe415
- Basic wind speed : 200 KMPH
- Depth of foundation : 2.0M
- below G.L upto top of raft
- Staging height : 13.35M
- Clear height between the braces : 2.70M
- No. of stagings : 2
- 8 Nos of 16 bars diagonal bars shall be provided at column brace junction
- For detailing of reinforcement I.S SP-34 shall be followed
- All dimensions are in 'mm' unless specified.

Asst Executive Engineer Dy.Executive Engineer

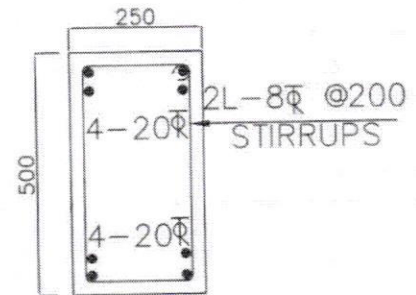
// Approved //

Chief Engineer-II
RWS&S, Gollapudi
Vijayawada.

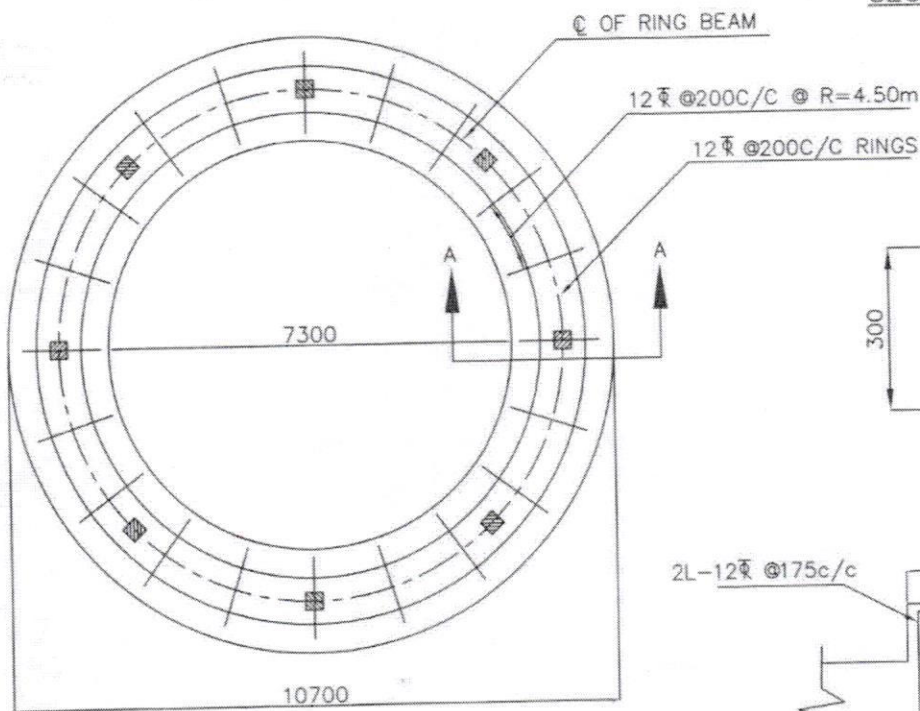
FOUNDATION DETAILS OF
200KL-OHSR WITH
13.35M STAGING
S.B.C. OF SOIL-5T/M²



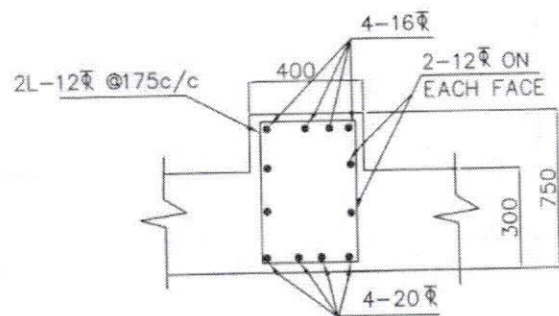
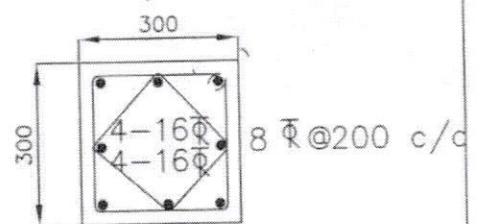
SECTION A-A



SECTION OF BRACE



BOTTOM REINFORCEMENT OF
RING FOUNDATION



SECTION OF RING BEAM

NOTES:

- Grade of concrete : M30
- Grade of steel : Fe415
- Basic wind speed : 200 KMPH
- Depth of foundation : 2.0M
- Staging height : 13.35M
- Clear height between the braces : 2.70M
- No. of stagings : 2
- 8 Nos of 16Φ diagonal bars shall be provided at column brace junction
- For detailing of reinforcement I.S SP-34 shall be followed
- All dimensions are in 'mm' unless specified.

Asst Executive Engineer

Dy. Executive Engineer

Chief Engineer-II
RWS&S, Gollapudi
Vijayawada.

FOUNDATION DETAILS OF
200KL-OHSR WITH
13.35M STAGING

S.B.C. OF SOIL-10T/M²