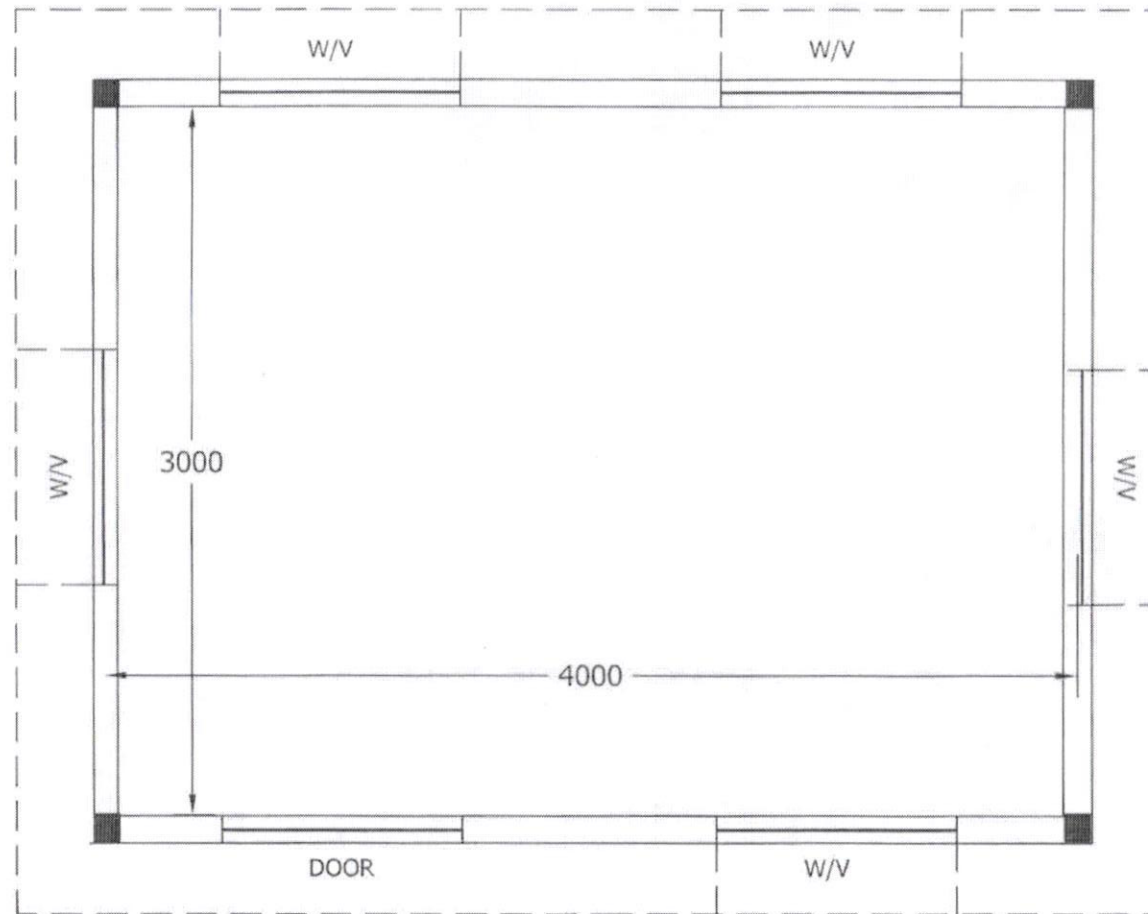


418

3.00 X 4.00 PUMPHOUSE



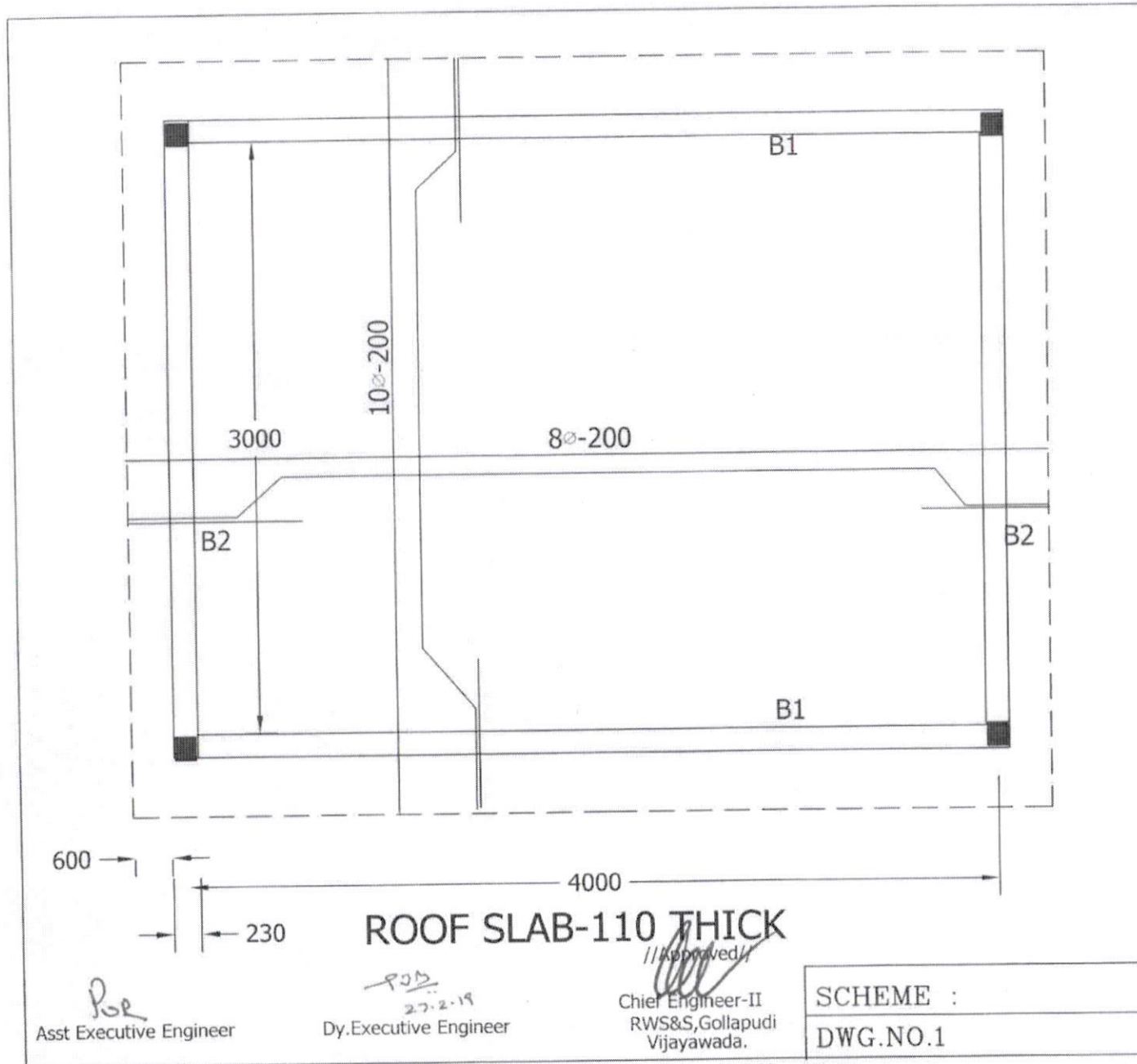
Per
AEE

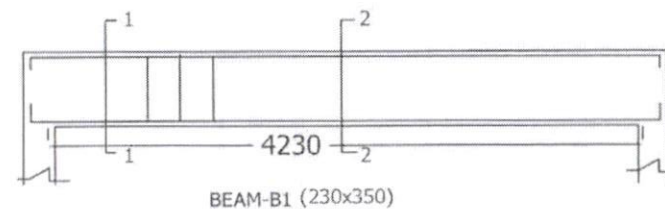
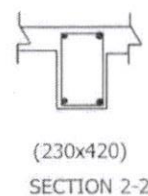
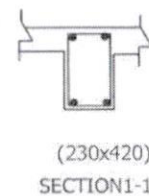
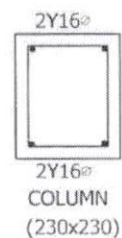
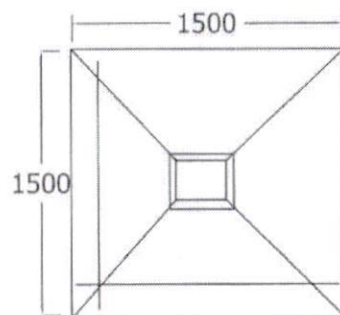
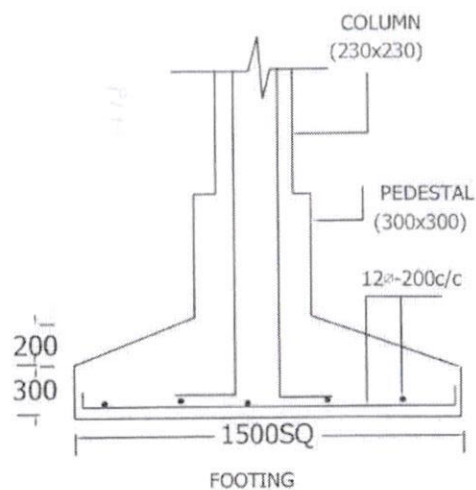
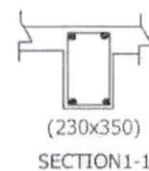
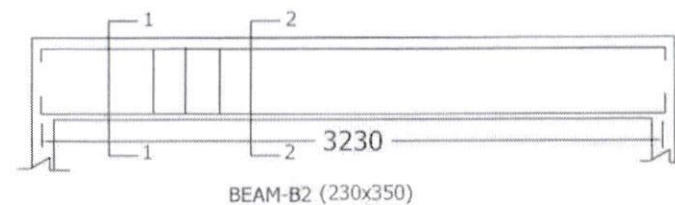
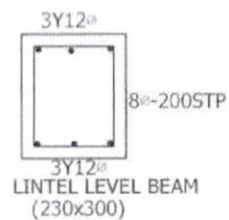
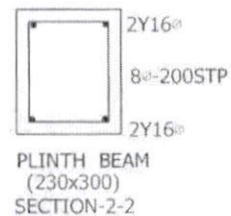
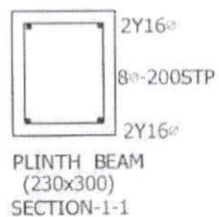
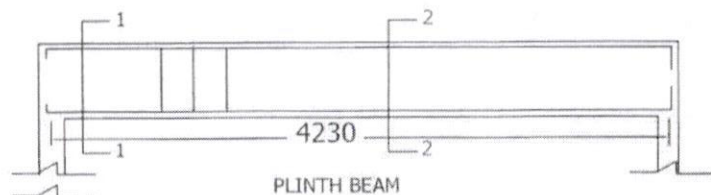
27.2.19
DEE

APPROVED
CE-II, RUS, VJA

SCHEME :
DWG.NO.1

419





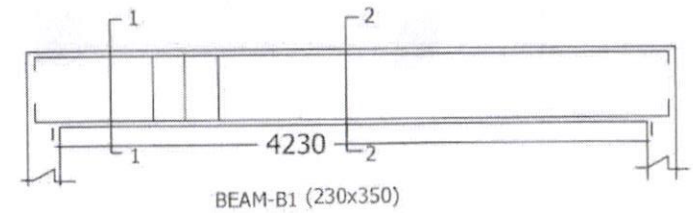
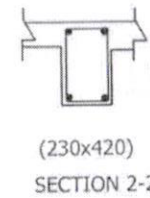
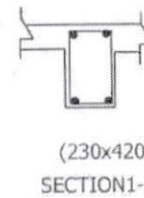
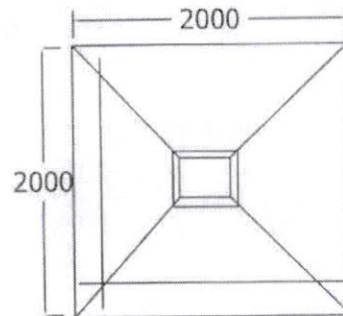
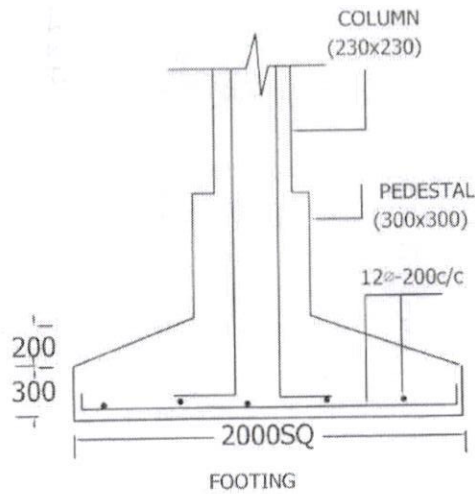
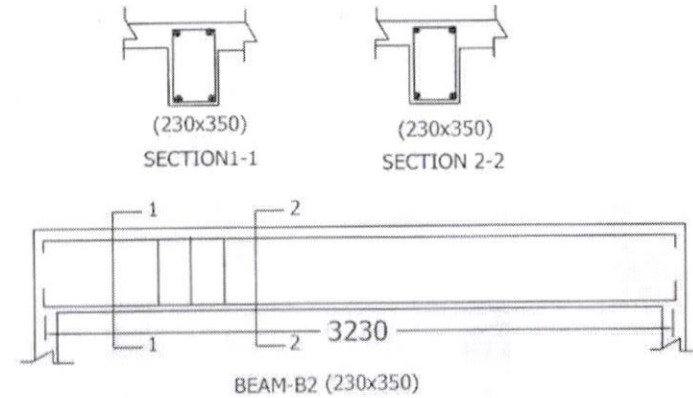
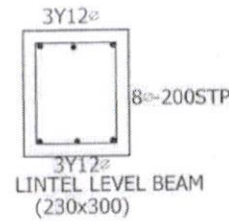
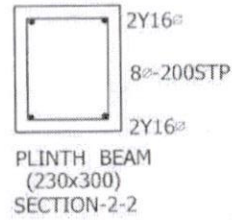
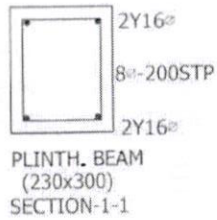
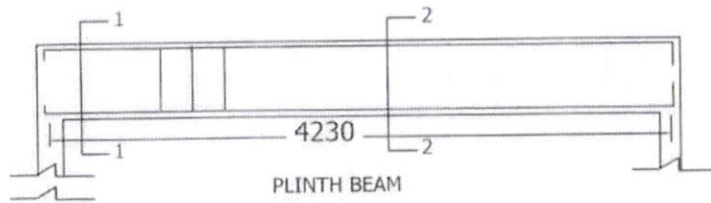
Note:- SBC of soil-10t/sqm

BR
AEE

905
27.2.2019
DEE

11APR60FD11
C.E.II, RWS, WJA

SCHEME :
DWG.NO.1



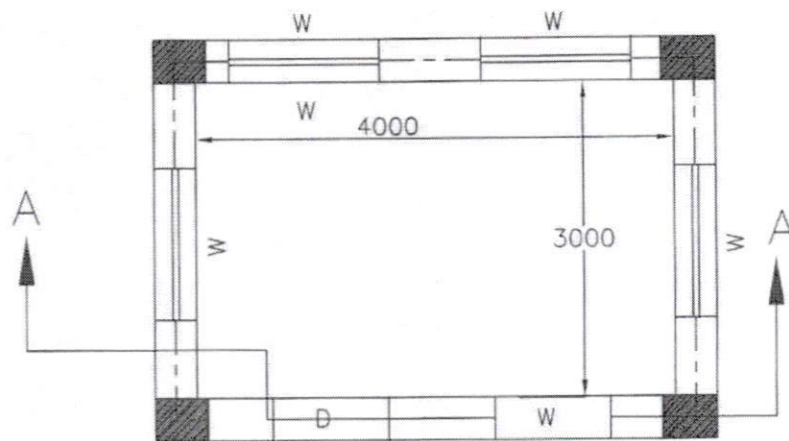
Note:- SBC of soil-5t/sqm

AEE

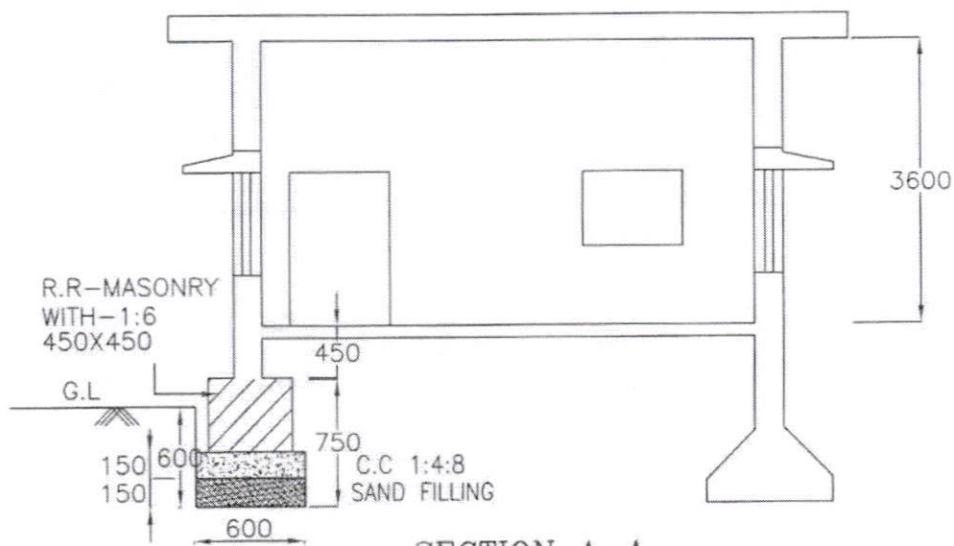
27-2-2019
DBE

11/03/2019
CE-II, RWS, WJA

SCHEME :
DWG.NO.1



PLAN



SECTION A-A

PUMP HOUSE OF 3 m X 4 m SIZE

POR
Asst. Executive Engineer

93B
27.2.19
Dy. Executive Engineer

Chief Engineer-3
RWS&S, Gopichudi
Vijayawada

SCHEME :

DWG.NO.1