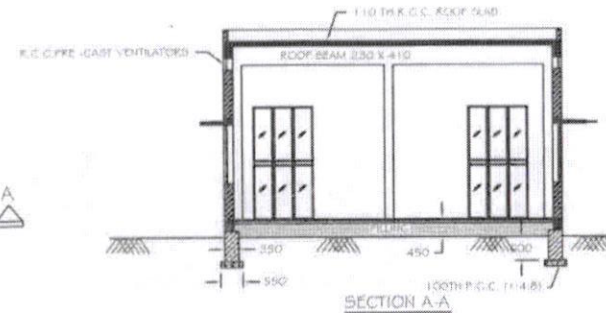
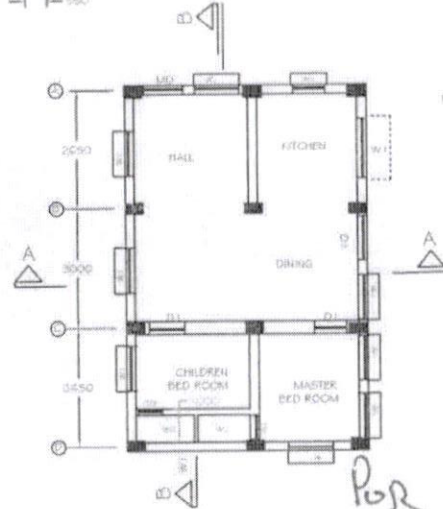
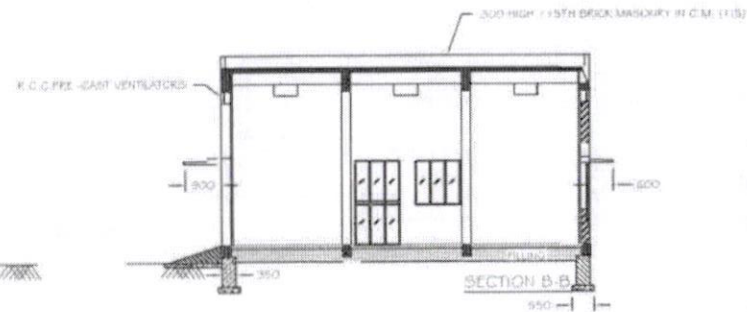
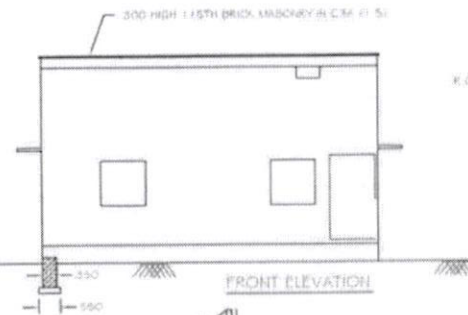


WATCHMAN/STAFF QUARTER OF SIZE-9.0 M X 6.0M

443



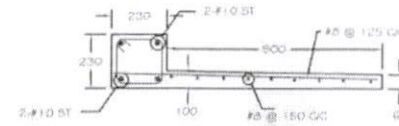
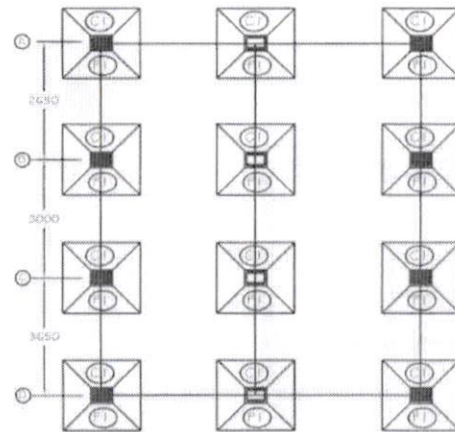
- 1) ALL DIMENSIONS ARE IN MM.
- 2) ALL LEVELS ARE IN METRE.
- 3) ALL R.C.C. WORK BY M30 GRADE (DESIGN MIX).
- 4) STEEL REINFORCEMENT OF R.C.C. BARS GRADE Fe 415.
- 5) P.C.C. BELOW FLOORINGS IN C.M. (1:4:8).
- 6) BASEMENT WALL IN R.C. MASONRY IN C.M. (1:5).
- 7) 250 TH BRICK MASONRY WALL IN C.M. (1:5).
- 8) PARAPET 1:15 TH BRICK MASONRY WALL IN C.M. (1:5).
- 9) FLOORING:
 - 100 TH CONCRETE 1:1:4 IN P.C.C. (1:4:8).
 - FINISHING WITH 12MM TH CEMENT MORTAR IN C.M. (1:3).
- 10) PLASTERING:
 - INTERNAL WALLS - 12 TH IN C.M. (1:5) SPONGE FINISH.
 - EXTERNAL WALLS - 20 TH IN C.M. (1:5) SPONGE FINISH.
 - CEILING - 12 TH IN C.M. (1:4).
- 11) PAINTING:
 - INTERNAL WALLS - D.B.D IN 2 COATS OVER PRIMARY COAT.
 - EXTERNAL WALLS - S.W. IN 2 COATS OVER PRIMARY COAT.
 - CEILING - WHITE WASH WITH SURFACER IN 2 COATS.
 - WINDOWS & DOORS - SYNTHETIC EMERALD PAINT IN 2 COATS OVER PRIMARY COAT.
- 12) ROOF FINISHING:
 - 20 TH IMPERMEABLE COAT IN C.M. (1:3).
- 13) STEEL GLAZED WINDOWS (1500 X 1500 (1:1:1)).
- 14) R.C.C. PRE-CAST VENTILATORS 600 X 100 (1:2:10).
- 15) MS-1500X2100, D1-1200X2100, D2-900X2000.

//Approved//

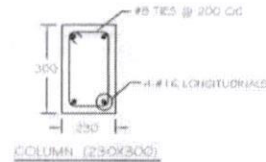
Char. Engineer-II
RWS&S, Gollapudi
Vijayawada.

P30/
27.2.19
Dy. Executive Engineer

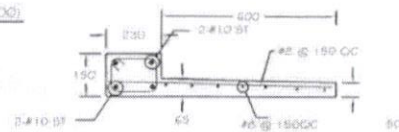
Asst. Executive Engineer



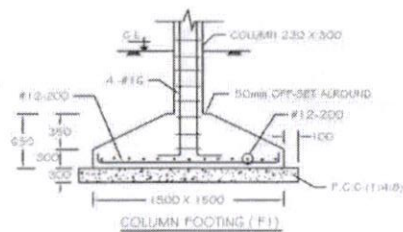
UNTEL # SUNSHADE OVER R/S



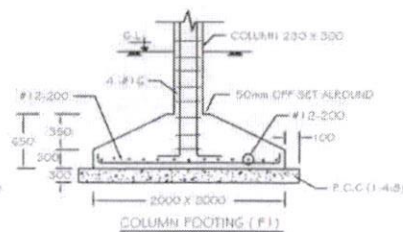
COLUMN (230X300)



UNTEL # SUNSHADE OVER WINDOWS



SBC-10T/SQM



SBC-5T/SQM

- NOTE:
- 1) ALL DIMENSIONS ARE IN mm.
 - 2) ALL R.C.C. WORK IN M20 GRADE (DESIGN MIX).
 - 3) STEEL REINFORCEMENT OF H.Y.S.D. BARS GRADE F245.
 - 4) CLEAR COVER TO REINFORCEMENT:
 - a) FOOTING : 50mm to BOTTOM MOST REINFORCEMENT.
 - b) COLUMN : 40mm to TOP.
 - c) BEAMS : 25mm to STRUCTURE.
 - 5) LAP LENGTHS:
 - a) IN COMPRESSION : 45 DIA.
 - b) IN TENSION : 55 DIA.
 - 6) ALL LAPS SHOULD BE STAGGERED.
 - 7) WORK SHOULD BE CARRIED OUT AS PER I.S. CODE 456:2000.
 - 7) S.O.C OF THE S.O.R-100 TMSQM

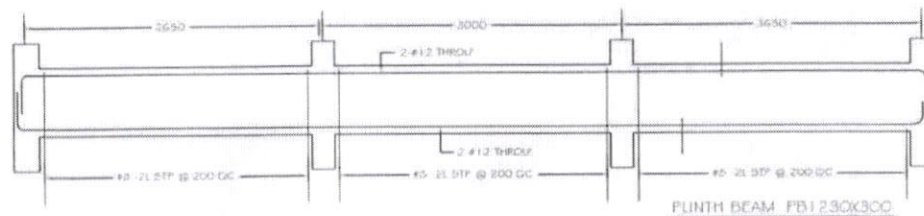
PGR
Asst Executive Engineer

PGR
27.2.19
Dy. Executive Engineer

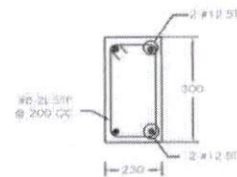
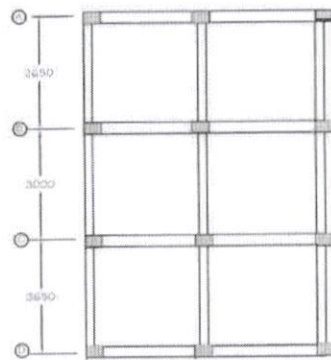
//Approved//
[Signature]
Chief Engineer-II
RWS&S, Gollapudi
Vijayawada.

444

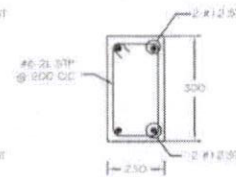
545



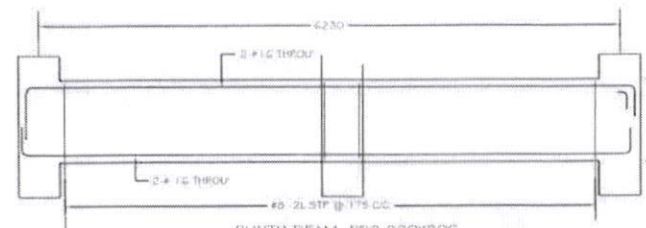
PLINTH BEAM FB1 230X300



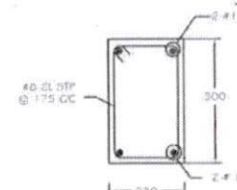
SECTION 2-2



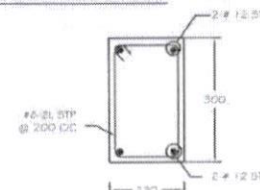
SECTION 1-1



PLINTH BEAM FB2 230X300



SECTION 1-1



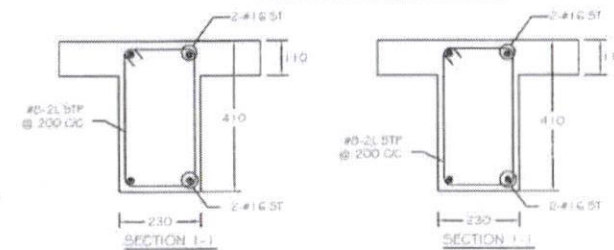
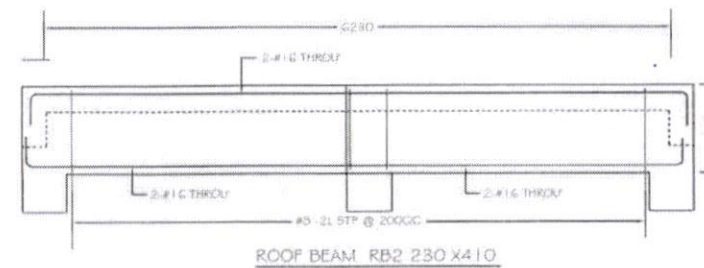
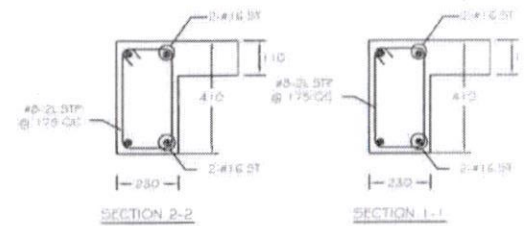
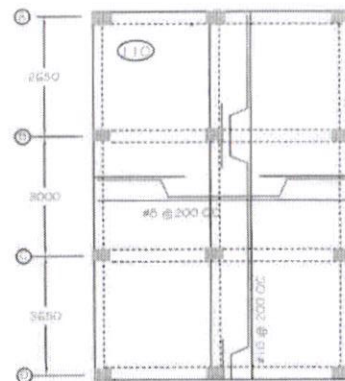
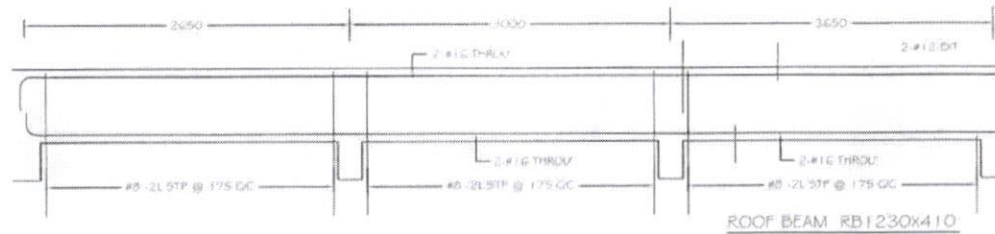
SECTION 1-1

- NOTE:
- 1) ALL DIMENSIONS ARE IN mm.
 - 2) ALL R.C.C. IS OF R 1420 GRADE/STRENGTH.
 - 3) STEEL REINFORCEMENT OF H.Y.S.D. BARS GRADE Fe 475.
 - 4) CLEAR COVER TO REINFORCEMENT:
 - a) FOOTING - 50mm to BOTTOM MOST REINFORCEMENT
 - b) COLUMN - 40mm to TIES.
 - c) BEAMS - 25mm to STIRRUPS.
 - 5) LAP LENGTHS:
 - a) IN COMPRESSION - 45 DIA.
 - b) IN TENSION - 55 DIA.
 - 6) ALL LAPS SHOULD BE STAGGERED.
 - 7) WORK SHOULD BE CARRIED OUT AS PER I.S. CODE 456-2000.

br
Asst Executive Engineer

P23
27.2.17
Dy. Executive Engineer

Approved
[Signature]
Engineer-II
RW545, Gollapudi
Vijayawada.



Por
Asst. Executive Engineer

27/2/19
Dy. Executive Engineer

//Approved//
[Signature]
Chief Engineer-II
RW545, Gollapudi
Vijayawada.