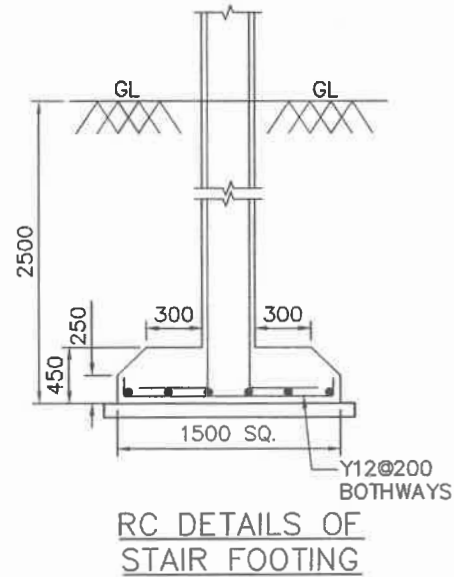
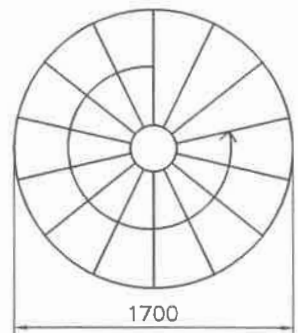
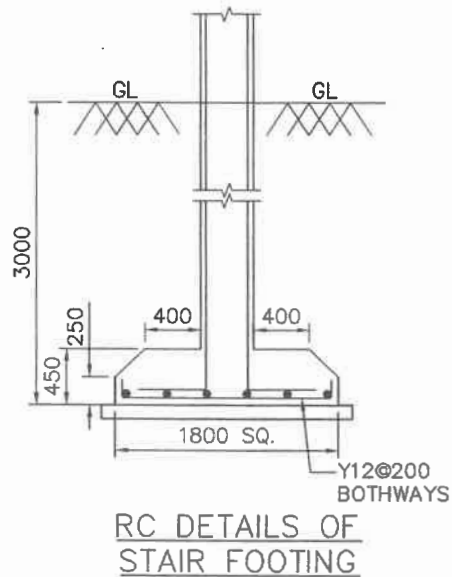
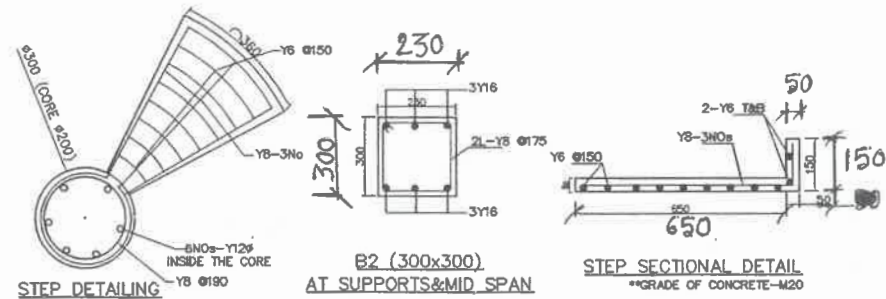


STRUCTURAL DETAILS OF SPIRAL STAIR CASE 20KL OHSR/OHBR STAGING UP TO 10.0M



NOTE:- 1) SBC \rightarrow \geq 5T/SQM TO $<$ 10T/SQM
2) STAGING UP TO 10.0M ONLY
3) THE DEPTH OF FOUNDATION DEPENDS ON
SBC OF SOIL

h. Sindhu
AEE

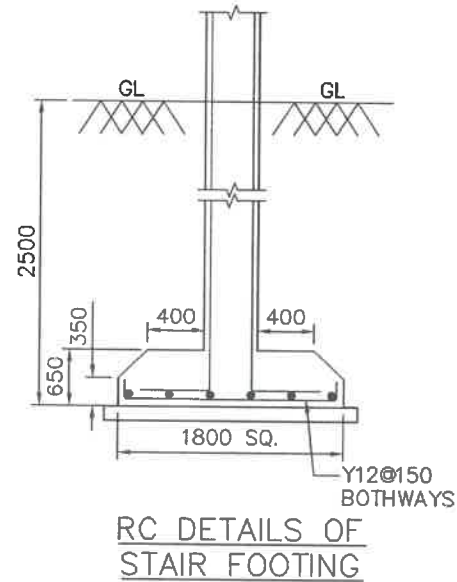
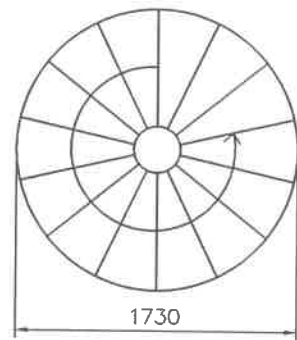
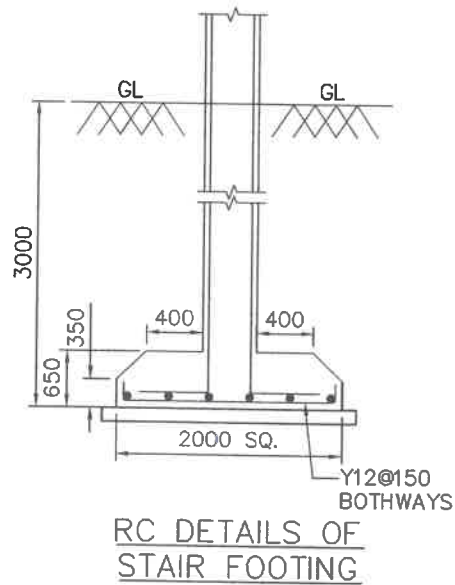
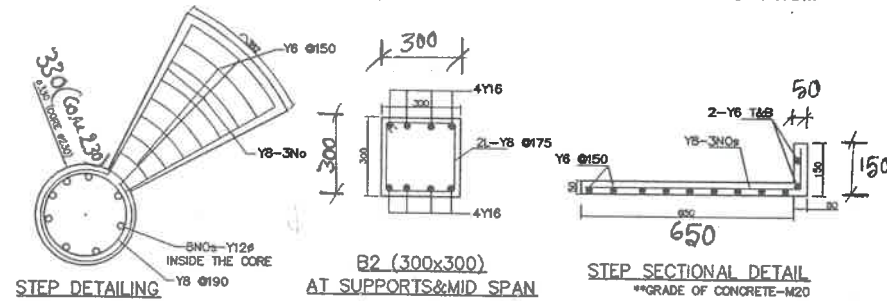
P.R.
DEE

NOTE:- 1) SBC \rightarrow \geq 10T/SQM
2) STAGING UP TO 10.0M ONLY
3) THE DEPTH OF FOUNDATION DEPENDS ON
SBC OF SOIL

y.s.
EE

//Approved//
P. S.
Chief Engineer-II
RWS&S, Gollapudi
Vijayawada.

]]STRUCTURAL DETAILS OF SPIRAL STAIR CASE OHSR/OHBR STAGING ABOVE 10.0M TO 14.0M



NOTE:- 1) SBC \rightarrow $\geq 5\text{T/SQM}$ TO $< 10\text{T/SQM}$
2) STAGING ABOVE 10.0M TO 14.M ONLY
3) THE DEPTH OF FOUNDATION DEPENDS ON
SBC OF THE SOIL

NOTE:- 1) SBC \rightarrow $\geq 10\text{T/SQM}$
2) STAGING ABOVE 10.0M TO 14.M ONLY
3) THE DEPTH OF FOUNDATION DEPENDS ON
SBC OF THE SOIL

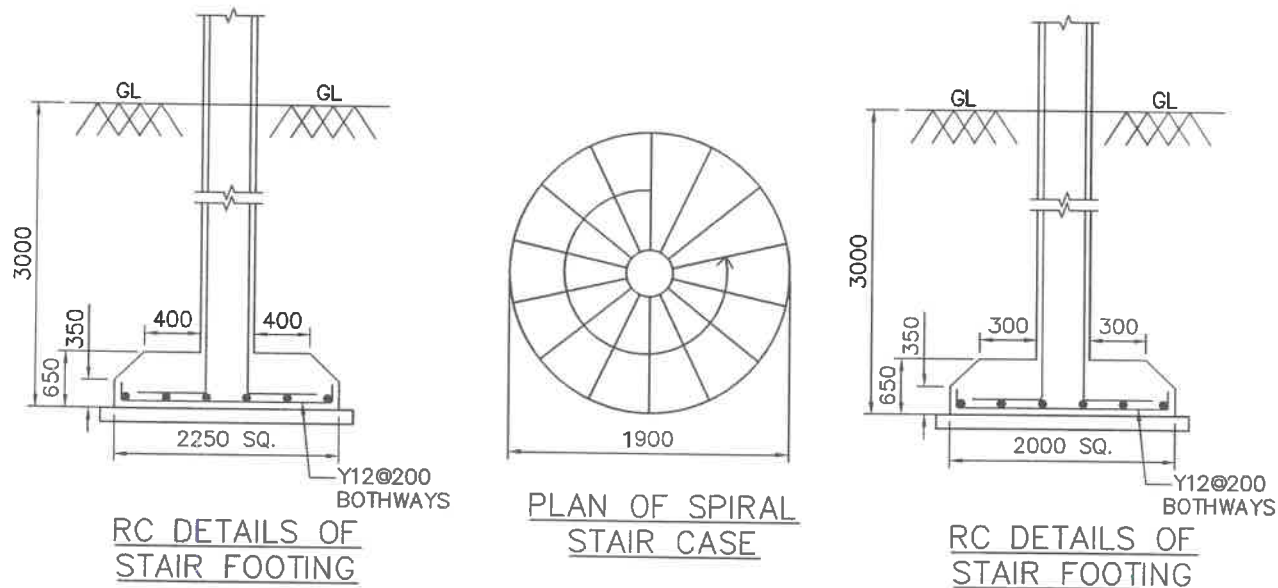
H. Sundar
AEE

P. K.
DEE

Y. S.
EE

// Approved //
R. S. S.
Chief Engineer-II
RWS&S, Gollapudi
Vijayawada.

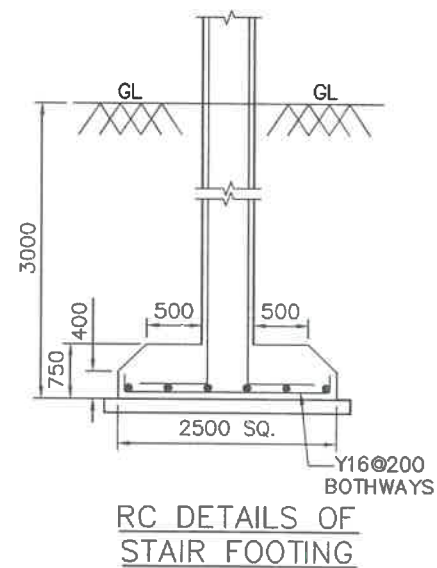
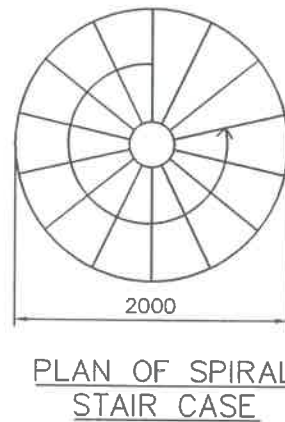
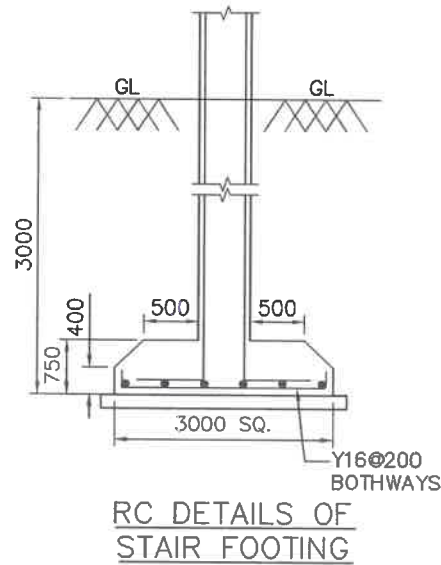
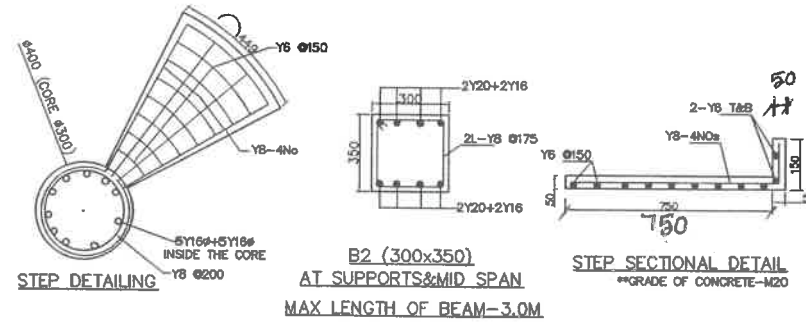
১৫৫



NOTE:- 1) SBC $\rightarrow \geq 10\text{T/SQM}$
2) STAGING FROM ABOVE 14.M TO 20M ONLY
3) THE DEPTH OF FOUNDATION DEPENDS ON
SBC OF SOIL

Chief Engineer-11
RWS&S, Gollapudi
Vijayawada.

STRUCTURAL DETAILS OF SPIRAL STAIR CASE OHSR/OHBR STAGING ABOVE 20M TO 30M



NOTE: - 1) SBC \rightarrow $\geq 5T/SQM$ TO $< 10T/SQM$
2) STAGING FROM ABOVE 20.M TO 30M ONLY
3) THE DEPTH OF FOUNDATION DEPENDS ON SBC OF SOIL

H. Sridhar
AEE

Ba
DEE

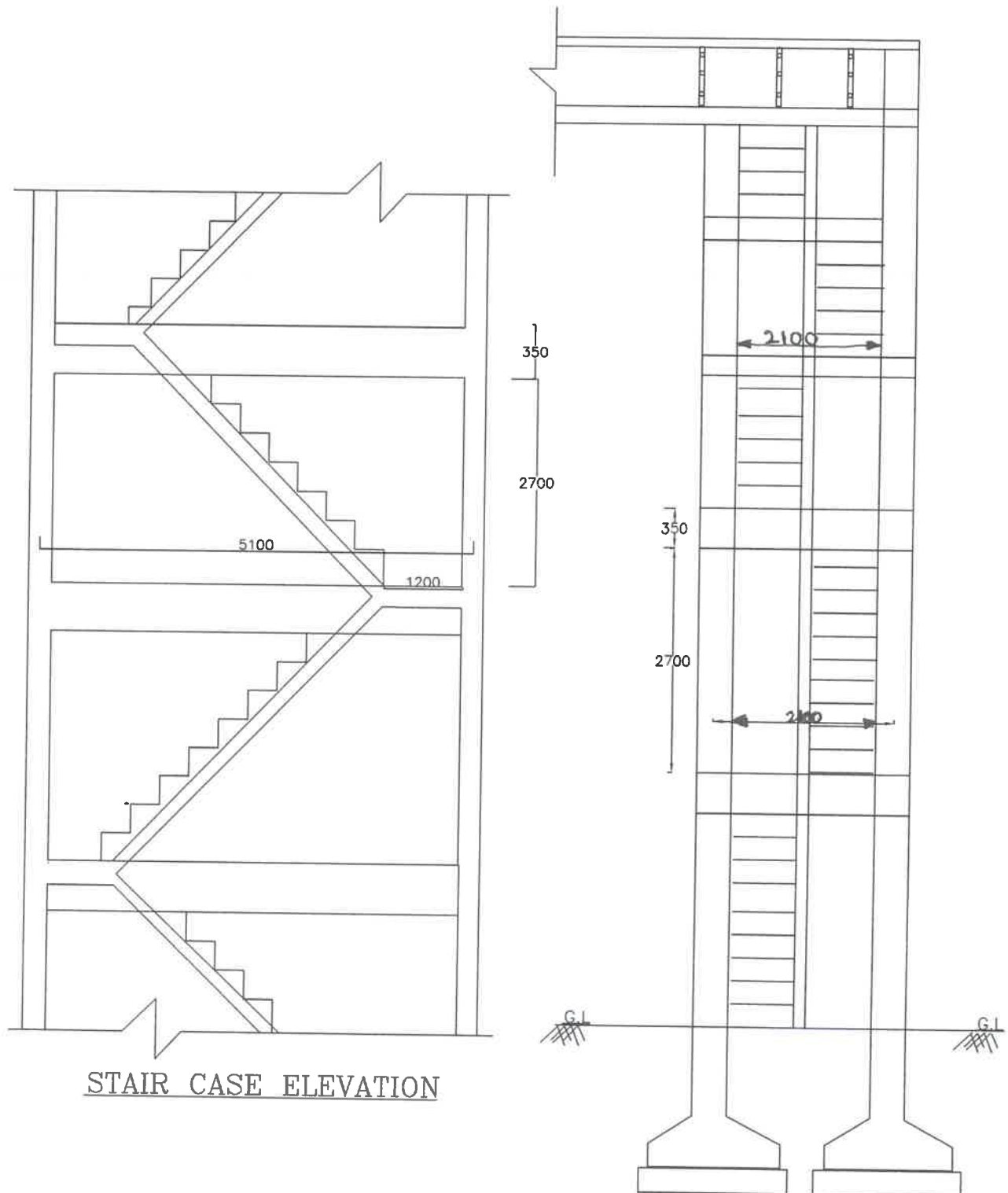
NOTE: - 1) SBC \rightarrow $\geq 10T/SQM$
2) STAGING FROM ABOVE 20.M TO 30M ONLY
3) THE DEPTH OF FOUNDATION DEPENDS ON SBC OF SOIL

Y.S
EE

//Approved//

Chief Engineer - II
RWS&S, Gollapudi
Vijayawada.

DOGLEGED STAIR CASE FOR OHSR



H. Sundhija
AEE

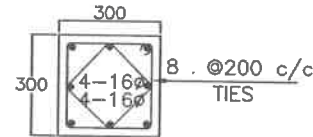
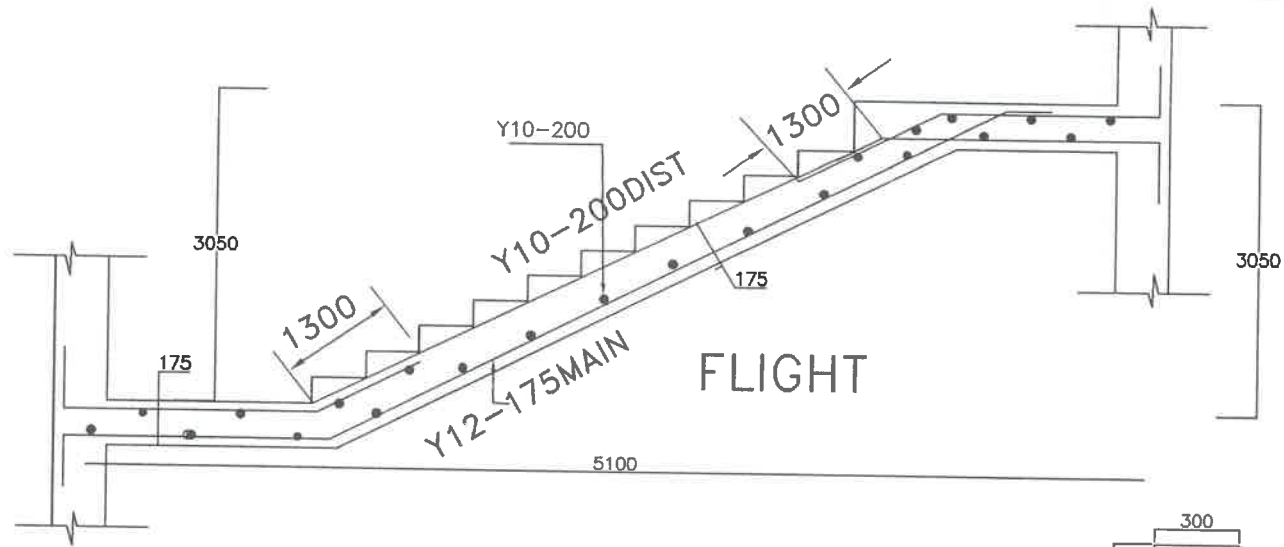
P. R.
DEE

Y. S.
EE

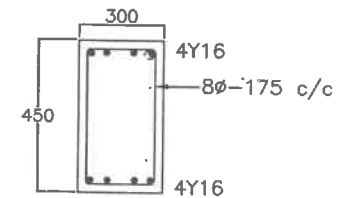
//Approved//

R. S.
Chief Engineer-II
RWS&S, Gollapudi
Vijayawada.

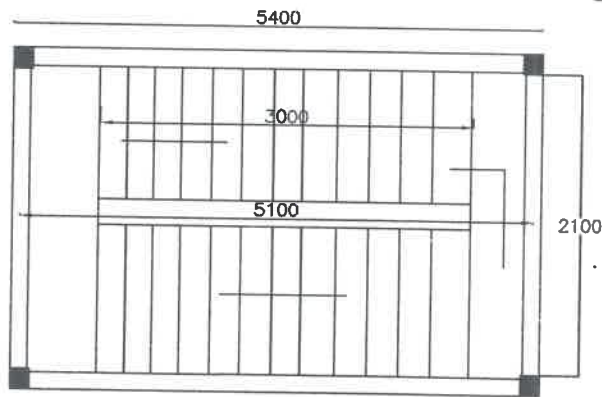
578



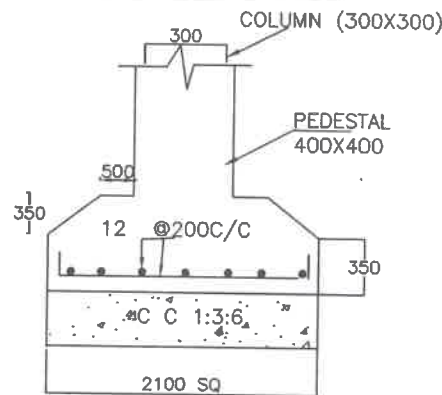
SECTION OF COLUMN



STAIR CASE BRACE

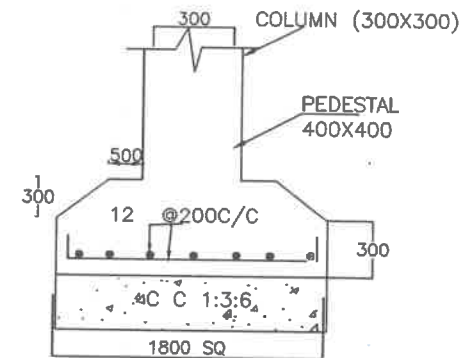


STAIR CASE PLAN



STAIR CASE FOOTING

SBC OF SOIL-5 T/SQM



STAIR CASE FOOTING

SBC OF SOIL-10 T/SQM

NOTE:- 1) FLIGHT WIDTH-1.0M, LANDING WIDTH-1.20 AND S S RAILING 1.0 HIEGHT
2) THE STAIR CASE SHALL BE CLOSED WITH BRICK WORK THREE SIDES AND FRONT SIDE MS COLLAPSIBLE GATE UPTO 1ST BRACE LEVEL.

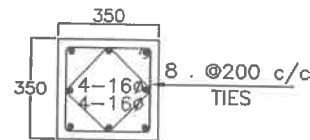
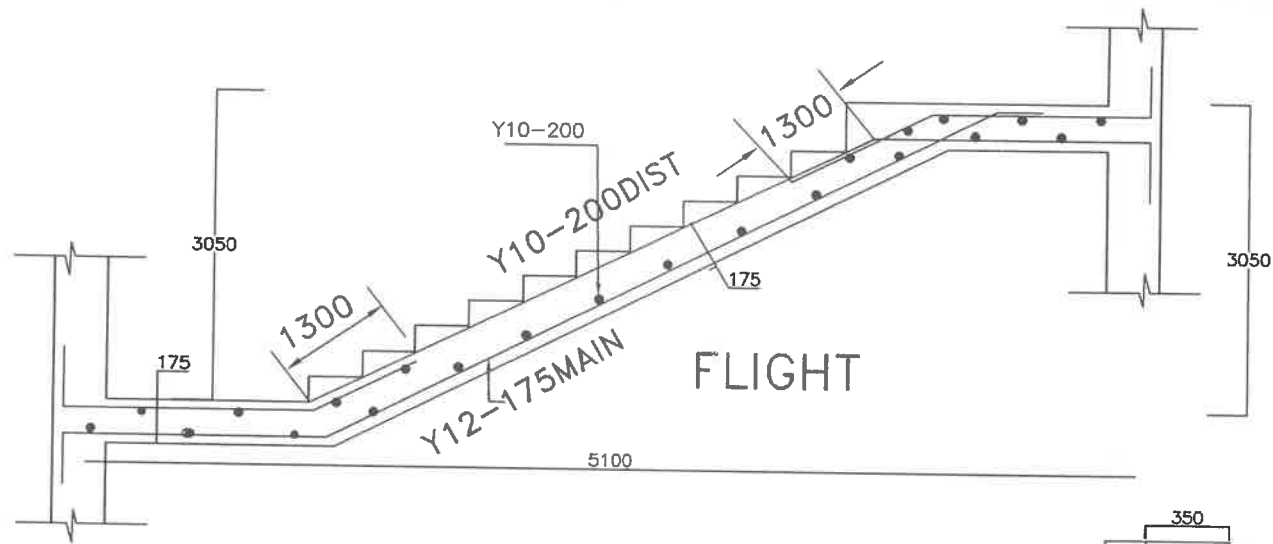
H. Sindhuja
AEE

P. R.
DEE

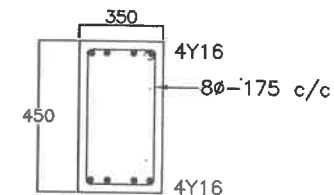
NOTE:- STAGING UPTO 15.0M ONLY //Approved//
Y.S.
EE

Chief Engineer-II
RWS&S, Gollapudi
Vijayawada.

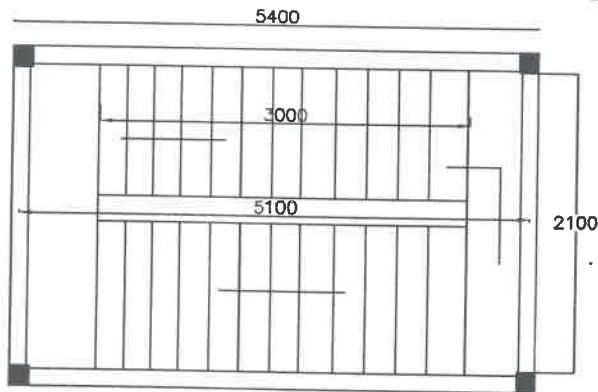
579



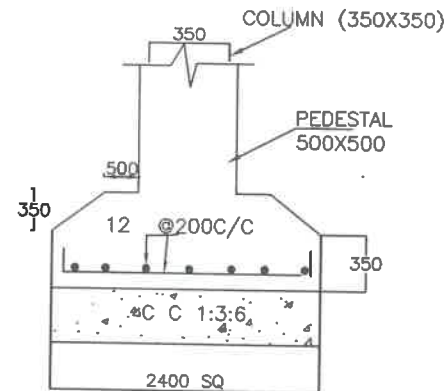
SECTION OF COLUMN



STAIR CASE BRACE

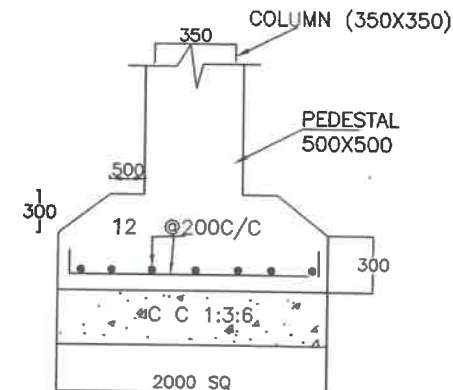


STAIR CASE PLAN



STAIR CASE FOOTING

SBC OF SOIL-5 T/SQM



STAIR CASE FOOTING

SBC OF SOIL-10 T/SQM

NOTE:- 1) FLIGHT WIDTH-1.0M, LANDING WIDTH-1.20 AND S S RAILING 1.0 HIEGHT
2) THE STAIR CASE SHALL BE CLOSED WITH BRICK WORK THREE SIDES AND FRONT SIDE MS COLLAPSIBLE GATE UPTO 1ST BRACE LEVEL.

NOTE:- STAGING ABOVE 15.0M

///Approved//

H. Sindhuja
AEE

Rop
DEE

YS
EE

Chief Engineer-II
RWS&S, Gollapudi
Vijayawada.