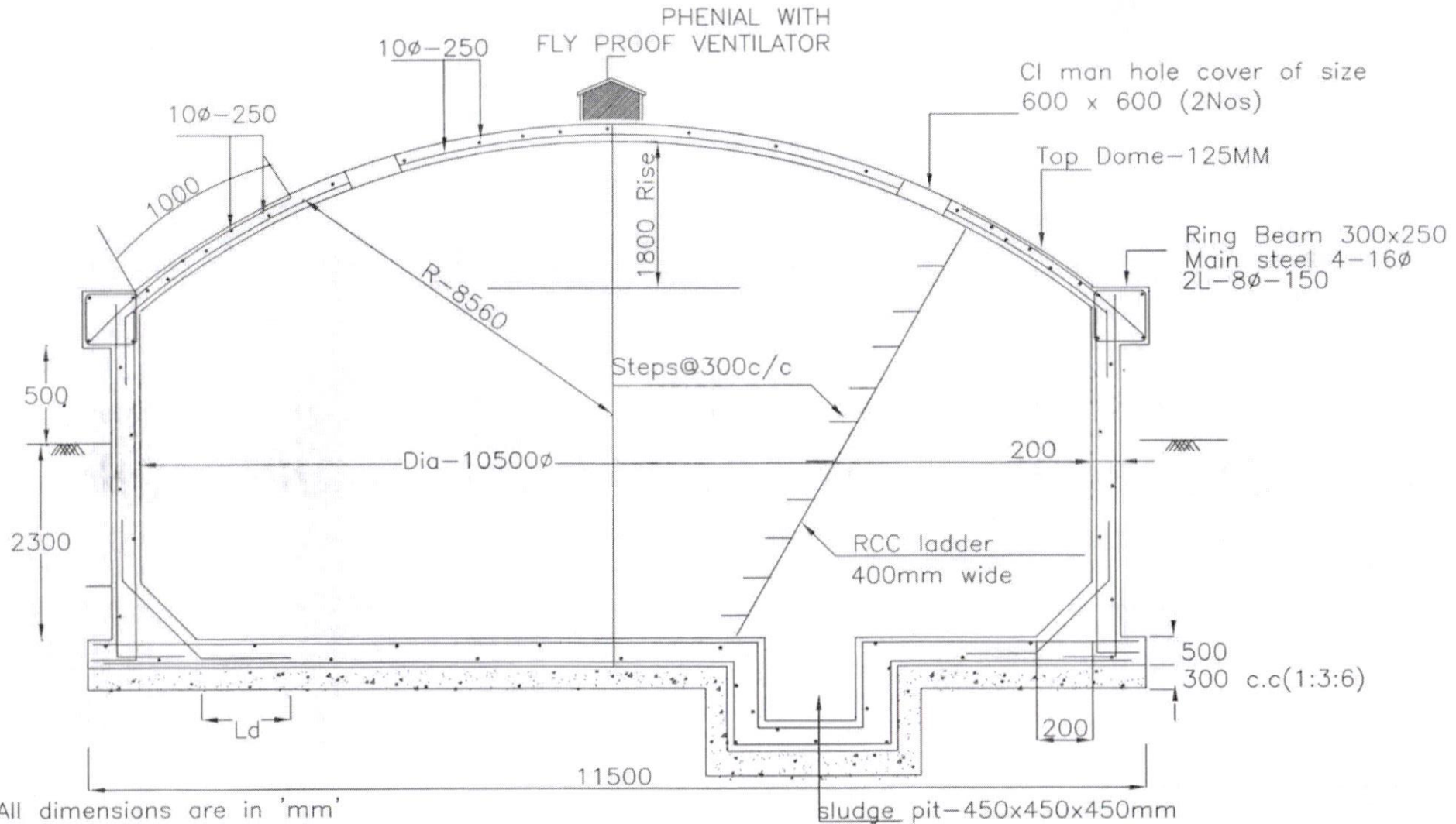


## 200 KL SUMP

171



All dimensions are in 'mm'  
Concrete mix V.R.C.C M30  
Steel Fe-415  
Reinforcement Details shall be as per IS - SP34

*Pon*

Asst Executive Engineer

*RJM*  
25.01.19

Dy.Executive Engineer

// Approved //

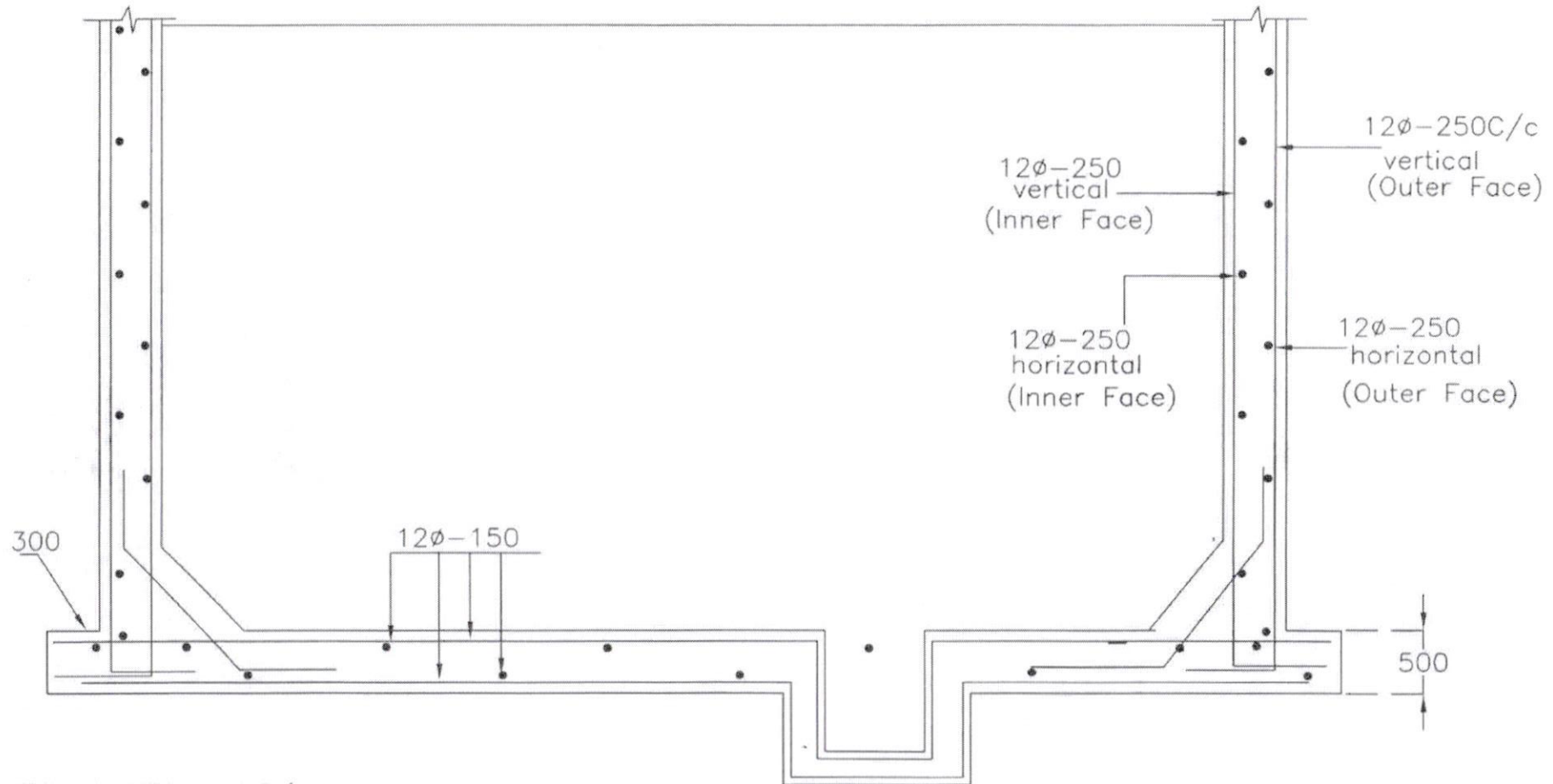
*[Signature]*  
Chief Engineer-II  
RWS&S, Gollapudi  
Vijayawada.

Sump is designed for uplift

SCHEME:

DWG.NO.1

## 200 KL SUMP



SBC OF SOIL  $\geq 5$  T/sqm

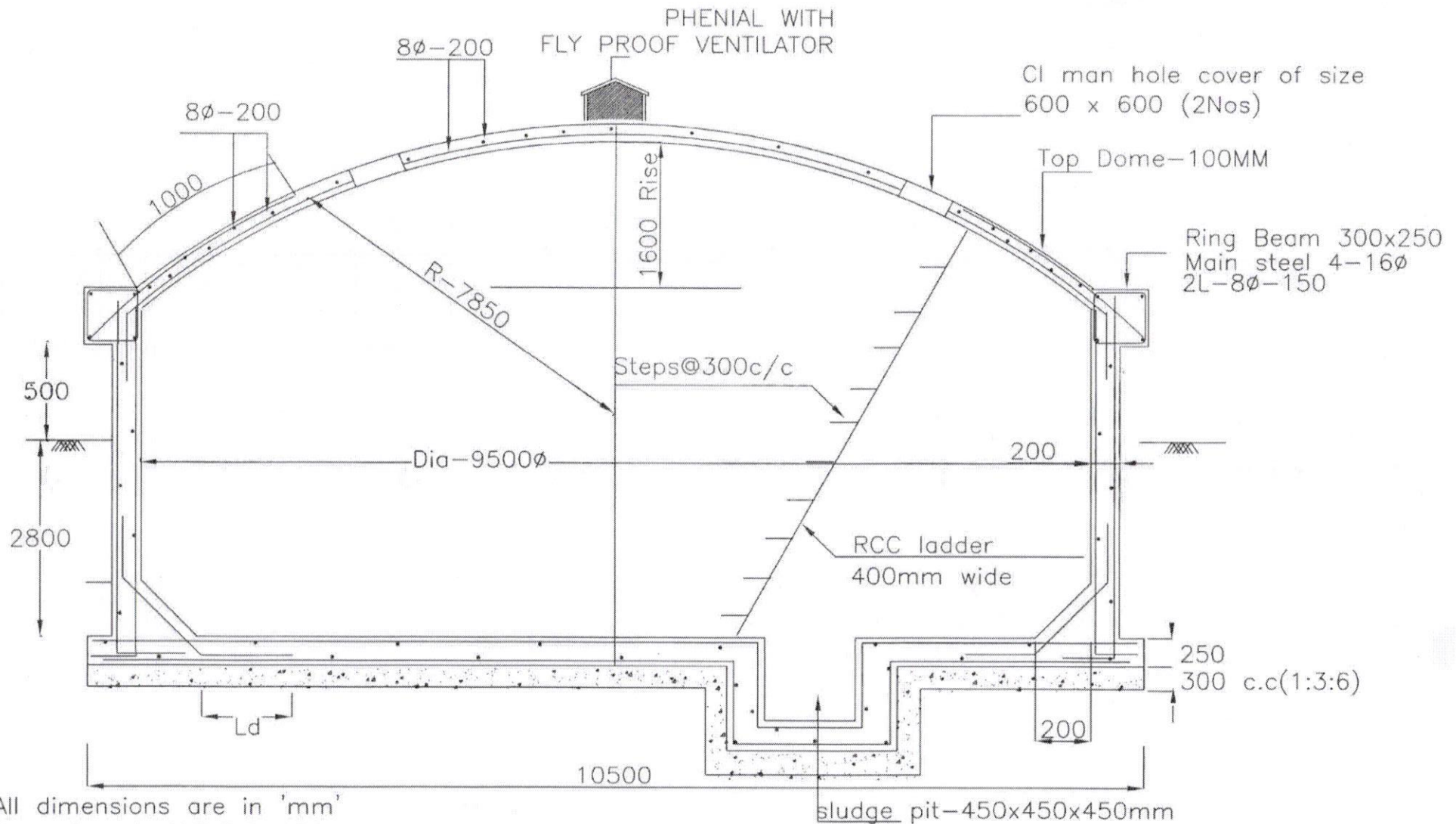
Note: provide sand bed as per site conditions and verify the uplift condition before grounding the work, if depth of water table  $< 1.0$ m below GL

Asst Executive Engineer

Dy. Executive Engineer

Chief Engineer-II  
RWS&S, Gollapudi  
Vijayawada.

SCHEME:  
DWG.NO.2



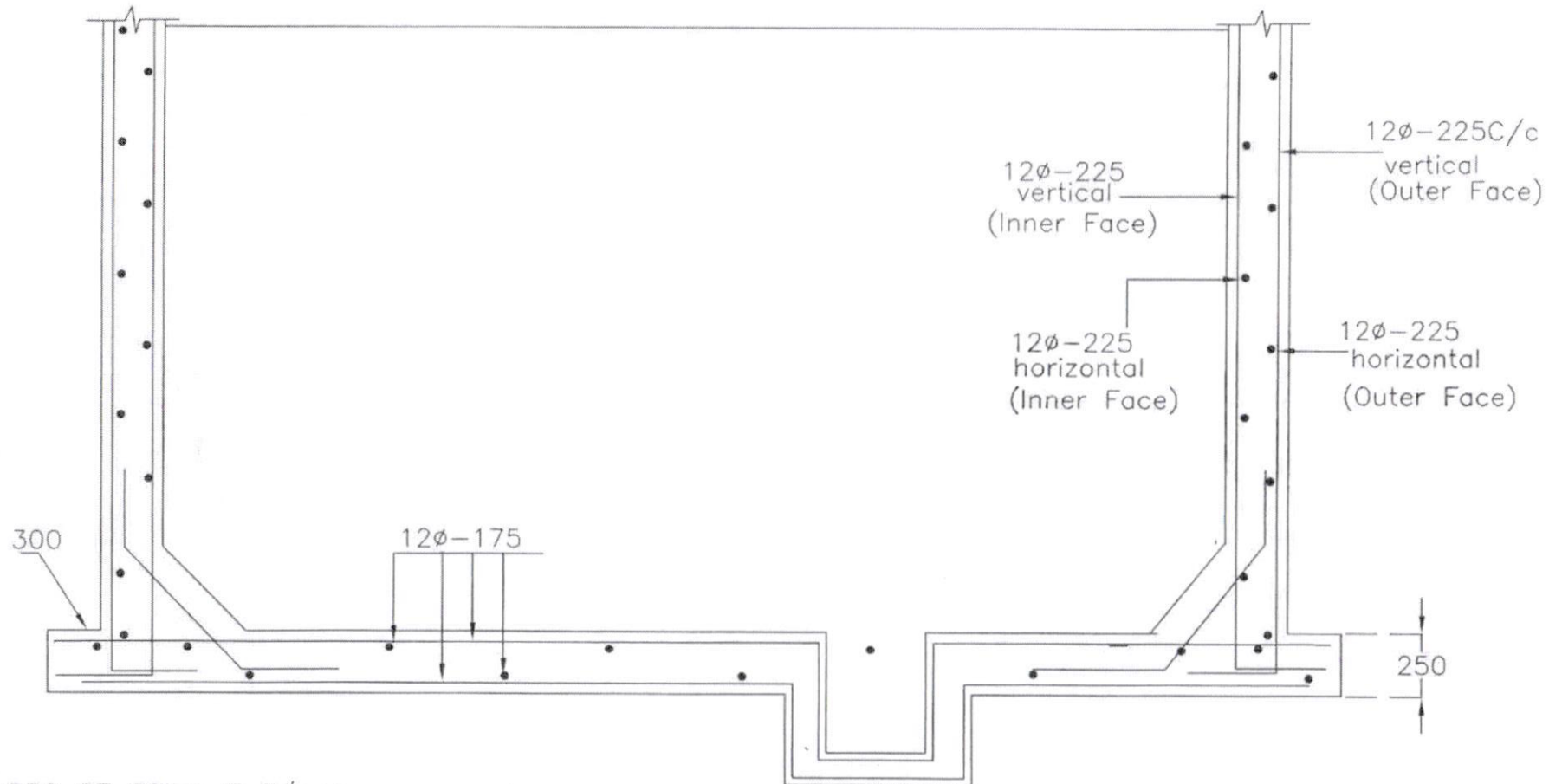
All dimensions are in 'mm'  
Concrete mix V.R.C.C M30  
Steel Fe-415  
Reinforcement Details shall be  
as per IS - SP34

Chief Engineer-II  
RWS&S, Gollapudi  
Vijayawada.

SCHEME:

DWG.NO.1

## 200 KL SUMP



Asst Executive Engineer

Dy. Executive Engineer

Approved  
Chief Engineer-II  
RWS&S, Gollapudi  
Vijayawada.

SCHEME:

DWG.NO.2