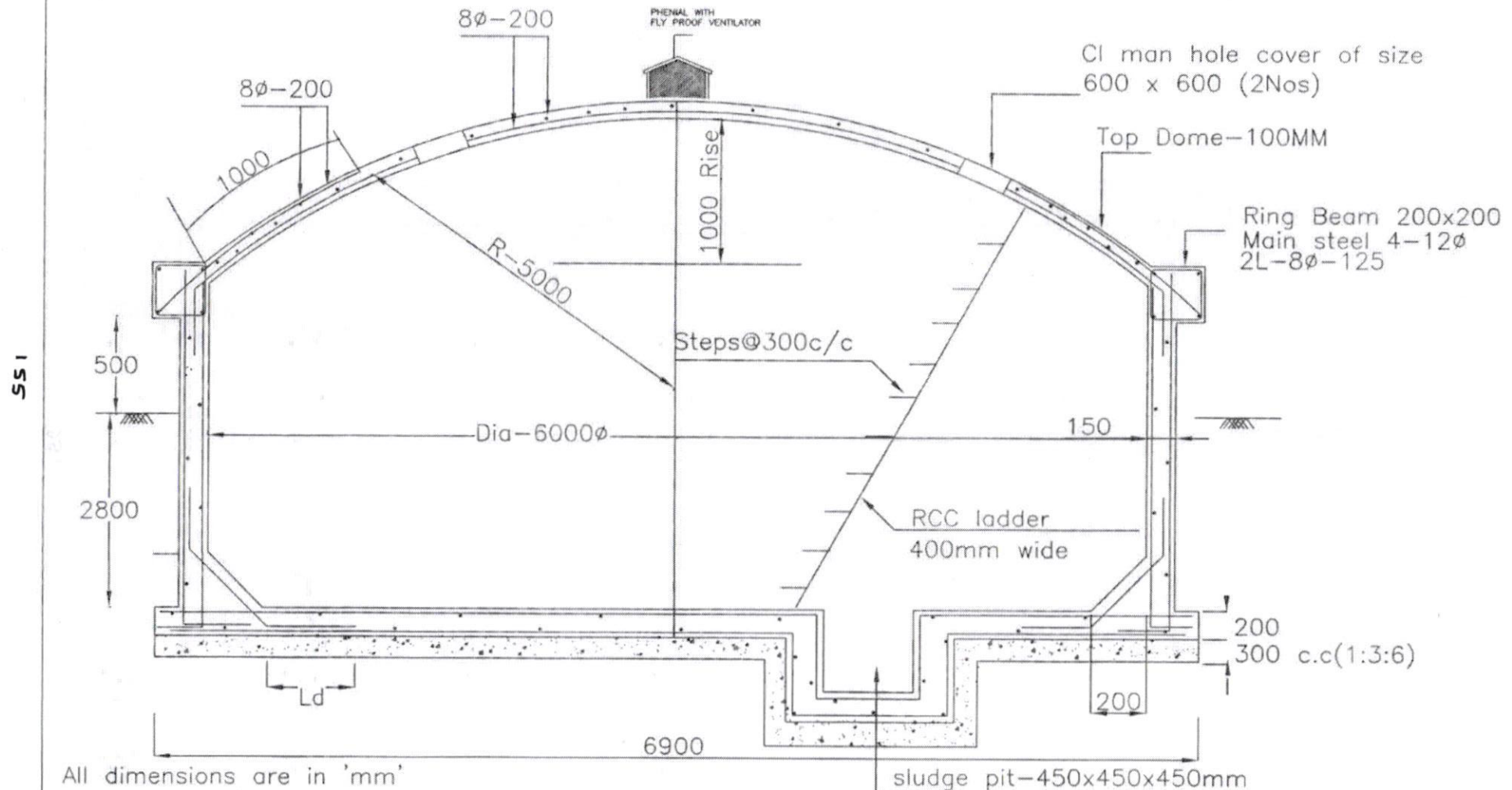


80 KL SUMP



All dimensions are in 'mm'
Concrete mix V.R.C.C M30
Steel Fe-415
Reinforcement Details shall be
as per IS - SP34

Asst Executive Engineer

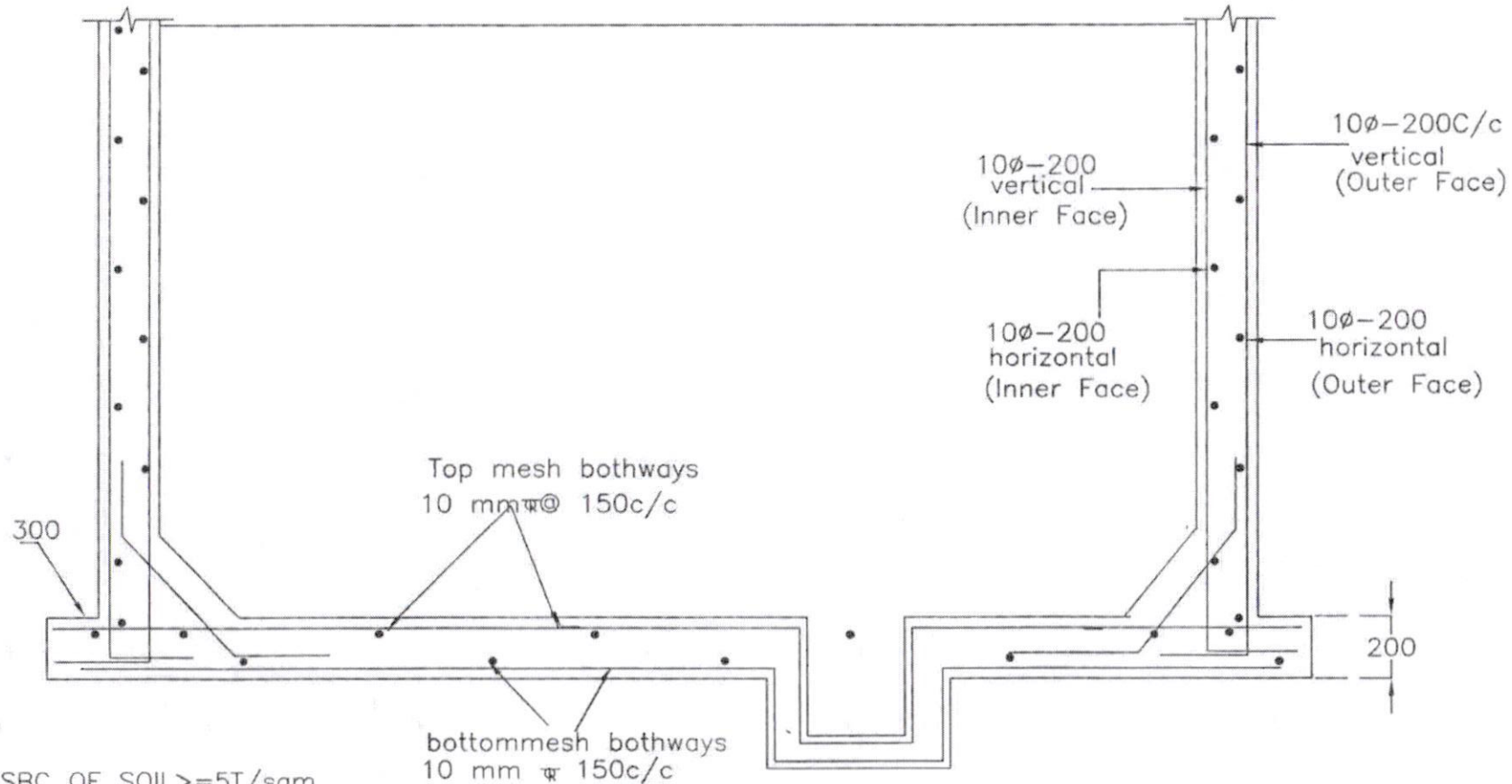
Dy.Executive Engineer

Chief Engineer-II
RWS&S, Gollapudi
Vijayawada.

SCHEME:

DWG.NO.1

80 KL SUMP



SBC OF SOIL \geq 5T/sqm

Note: provide sand bed as per site conditions and verify the uplift condition before grounding the work, if depth of water table $<$ 1.5m below GL

Asst Executive Engineer

Dy. Executive Engineer

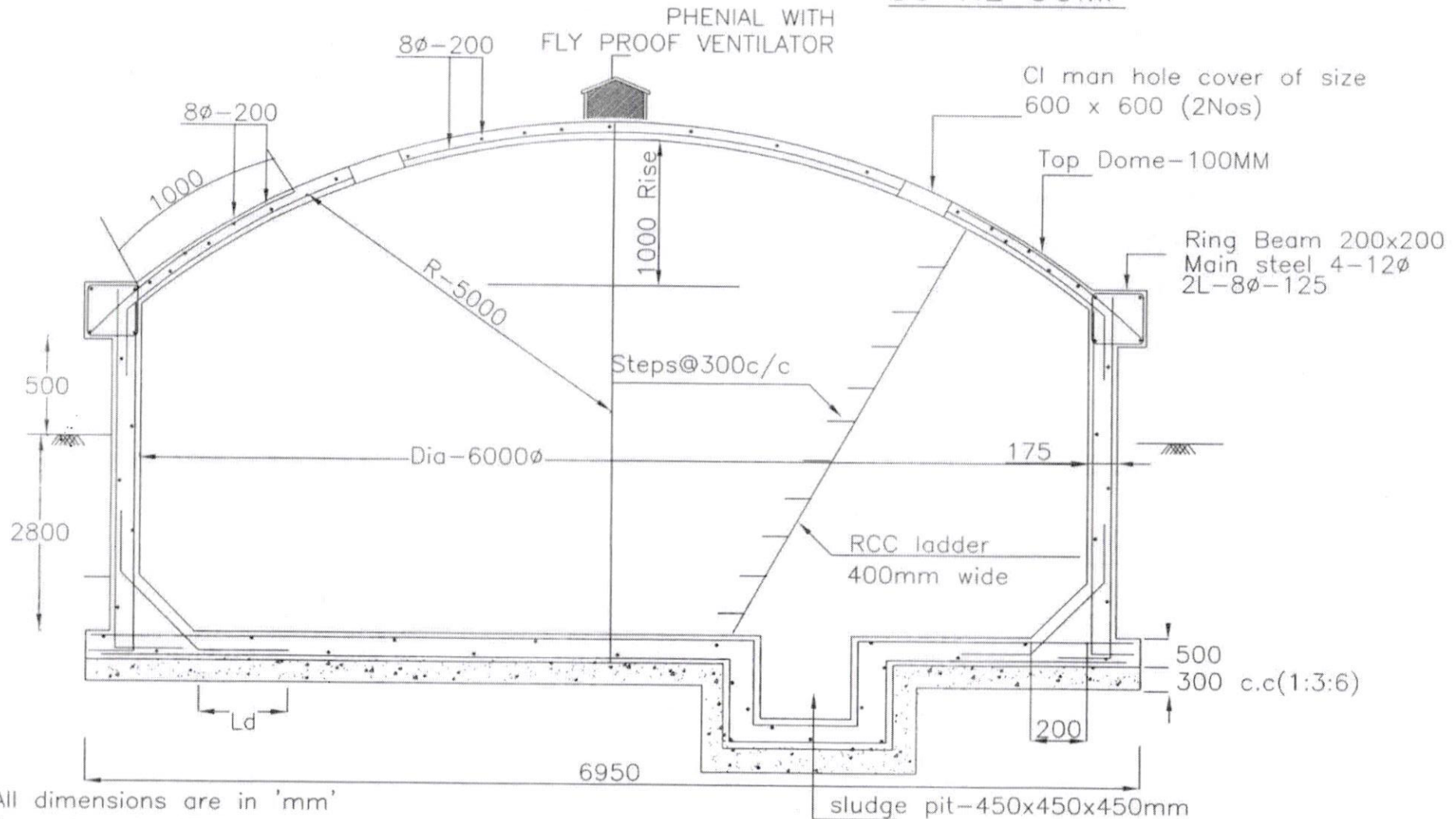
Approved//
Chief Engineer-II
RWS&S, Gollapudi
Vijayawada.

SCHEME:

DWG.NO.2

80 KL SUMP

IS 7



All dimensions are in 'mm'
Concrete mix V.R.C.C M30
Steel Fe-415
Reinforcement Details shall be as per IS - SP34

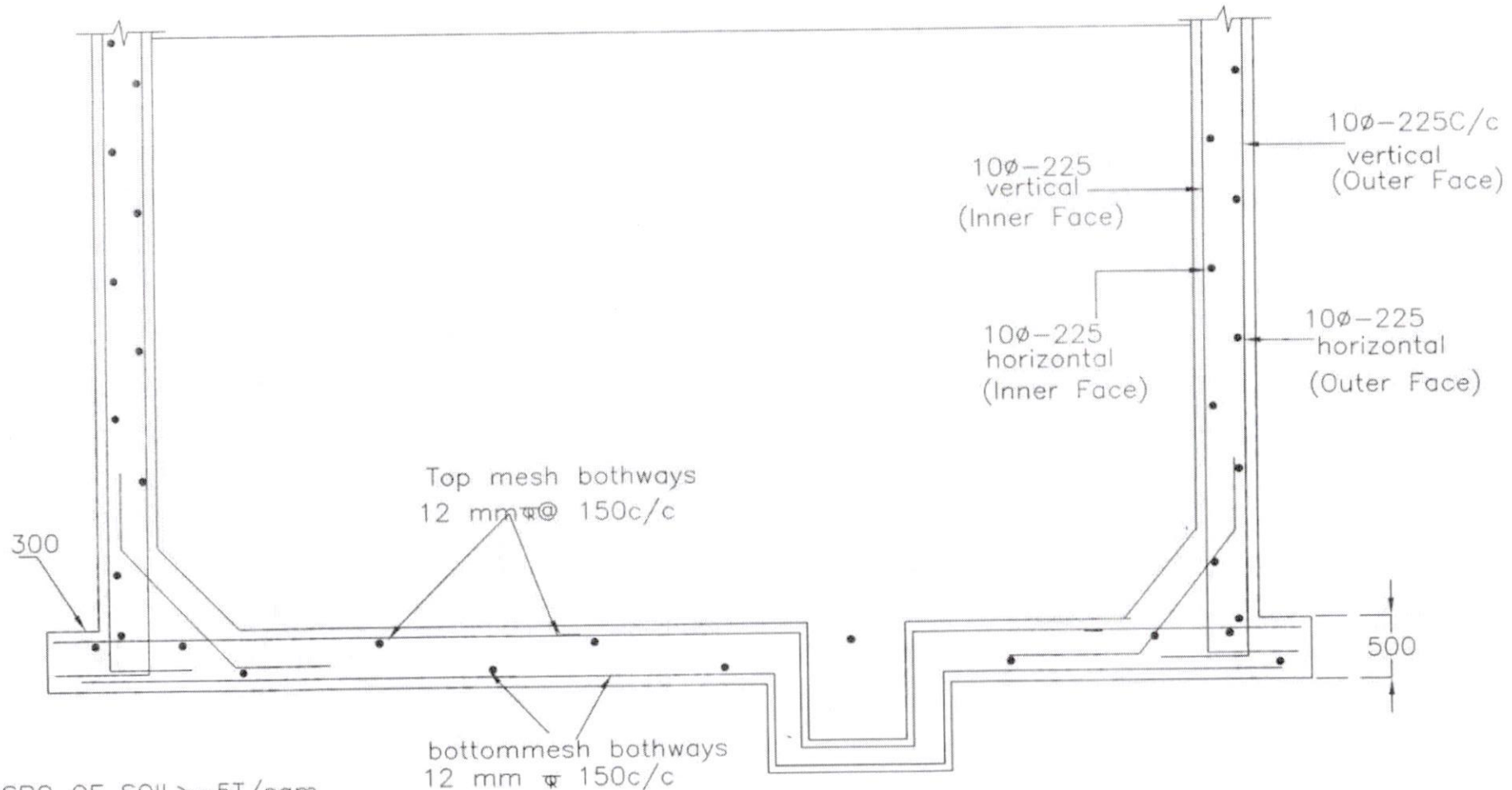
Asst Executive Engineer Dy.Executive Engineer

// Approved //
Chief Engineer-II
RWS&S, Gollapudi
Vijayawada.

Sump is designed for uplift

SCHEME:
DWG.NO.1

80 KL SUMP



SBC OF SOIL $\geq 5T/sqm$

Note: provide sand bed as per site conditions
and verify the uplift condition before grounding
the work, if depth of water table $< 0.90m$ below GL

Asst Executive Engineer

Dy. Executive Engineer

// Approved //
Chief Engineer-II
RWS&S, Gollapudi
Vijayawada.

SCHEME:
DWG.NO.2